

Shirt Club  
Pattern

# Basic Short Sleeve Shirt

*Dress it up - Dress it down - a Basic Shirt is a great addition to any wardrobe. This shirt has a simple lapel with collar neckline, an optional front patch pocket, optional darts and 4 different sleeve endings.*

*Make it dozens of times and it will never look the same!*

## **What is a Shirt Club Pattern?**

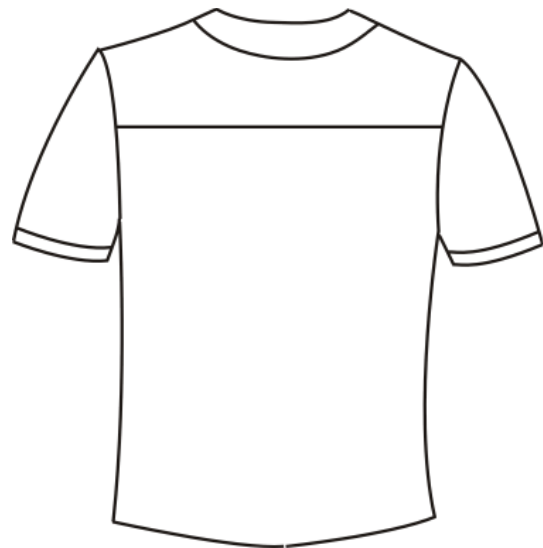
*Shirt Club Patterns are designed so you can mix and match. Any shirt/blouse bodies will easily interchange with any of the sleeves. See website for Cross-Reference Chart and details*

## Yardage Requirements

Yardage Requirements		S	M	L	XL
		(4-6)	(8-10)	(12-14)	(16-18)
Main Fabric	45"	2 yds	2 yds	2¼ yds	2¼ yds
Contrast (Banded Slv)	45"	⅓ yd	⅓ yd	⅓ yd	⅓ yd
Interfacing		1 yd	1 yd	1 yd	1 yd

## Notions

Buttons: (5) 5/8"



*This pattern and all instructions is copyrighted 2006 by Brensan Studios and The Brensan Group, LLC.*

*All rights reserved. Please contact for permission to reprint any portion hereof.*

**Brensan Studios™** #532 - 8912 E. Pinnacle Peak Rd F-9 - Scottsdale, AZ 85255

Website: [www.brensan.com](http://www.brensan.com)