

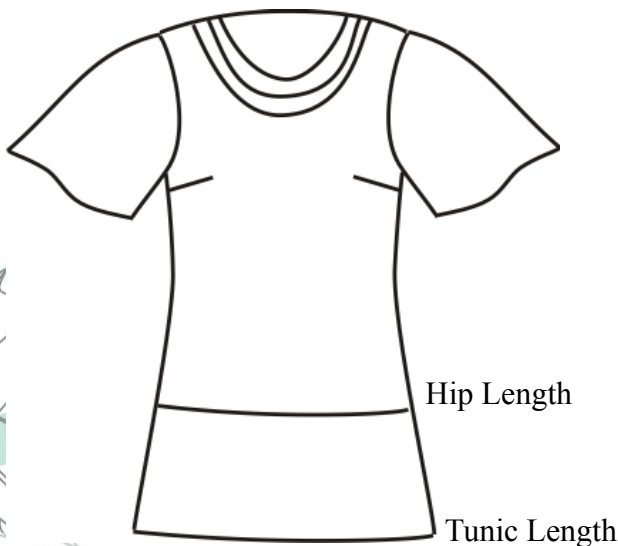
# Cowl Neck Tunic

*This beautiful Cowl Neck tunic/blouse is designed so you can have a bit of fun with the Cowl Neck itself. The Cowl portion of the pattern is separate and is cut on the bias for a soft drape, while the body portion of the pattern is cut on the straight-grain for stability. This pattern is close-fitting (like a Basic Shell) so you can shorten and wear under a jacket (with sleeves from our Basic Shell pattern). The Cowl portion is beautiful when cut from a 24" (or larger) scarf. This pattern does have a bust dart and pattern alteration guidelines are included.*

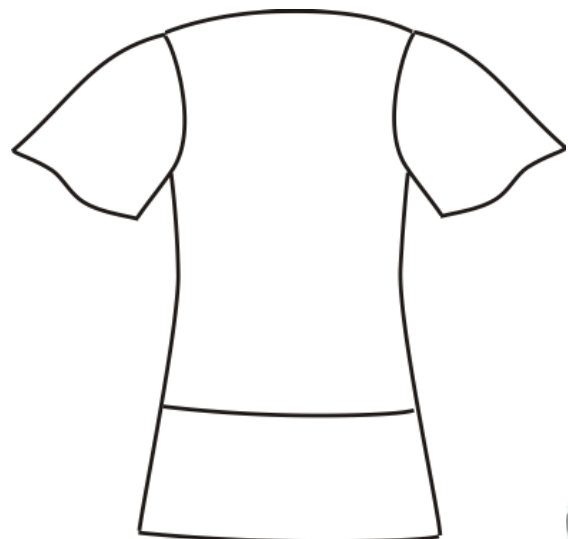
## Special Note:

*The Cowl Neck Tunic and Basic Shell Patterns have interchangeable sleeves. The Basic Shell has short and long sleeves.*

Yardage Requirements		S	M	L	XL
		(4-6)	(8-10)	(12-14)	(16-18)
<b>All Same Fabric</b>	45"	2yds	3 yds	3yds	3¼yds
	60"	1⅔yds	1⅔yds	1⅔yds	1⅔yds
<b>Separate Cowl (Pictured)</b>					
Main Fabric	45"	1½yds	2½yds	2½yds	2¾yds
	60"	1⅓yds	1⅓yds	1⅓yds	1⅓yds
Cowl Neck	45"	½ yd	½ yd	½ yd	½ yd
<i>Cowl Neck can also be cut from one (1) 24" Neck Scarf</i>					
Finished Measurements		S	M	L	XL
Bust		37¾"	39¾"	43¾"	46¾"
Hip / Lower Edge		41"	43"	46"	50"
Back Length - Hip Length		21"	21½"	22"	22½"
Back Length - Tunic Length		26"	26½"	27"	27½"



Front



Back

*This pattern and all instructions is copyrighted 2008 by Brensan Studios and The Brensan Group, LLC. All rights reserved. Please contact for permission to reprint any portion hereof.*

**Brensan Studios™** #532 - 8912 E. Pinnacle Peak Rd F-9 - Scottsdale, AZ 85255  
Website: [www.brensan.com](http://www.brensan.com)