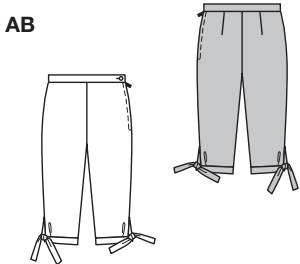
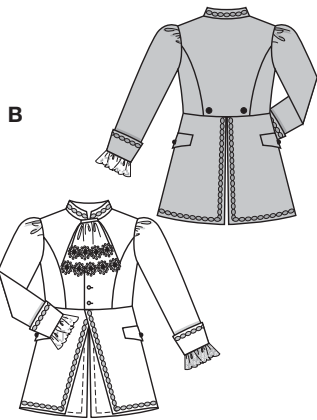
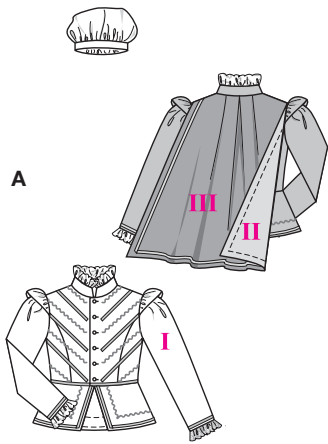


Größen • Tailles • Sizes
 Eur. : **116 - 152**
 US : **6 - 12**



**PRINZ, AMADEUS
 PRINCE, AMADEUS
 PRINCE, MOZART**



mittel, moins facile, average.

AB: körpernah, ajusté, fitted.

Stoffempfehlung:
 Faschings satin, Pannesamt;
 Garniturstoff B: Batist.

Tissus conseillés: satin
 carnaval, panne velours;
 Tissu garniture B: batiste.

Recommended fabrics:
 lining satin, panne velvet;
 Contrasting fabric B: batiste.

Größen Tailles • Sizes	Eur. US	114 cm / 45 ins							140 cm / 55 ins						
		116	122	128	134	140	146	152	116	122	128	134	140	146	152
A I	m yds	1.85 2 1/8	1.85 2 1/8	1.85 2 1/8	1.90 2 1/8	1.95 2 1/4	2.00 2 1/4	2.05 2 3/8	1.55 1 3/4	1.55 1 3/4	1.55 1 3/4	1.60 1 3/4	1.60 1 3/4	1.65 1 7/8	1.70 1 7/8
A II + III, je • par • each	m yds	0.60 2/3	0.60 2/3	0.65 7/8	0.65 7/8	0.70 7/8	0.70 7/8	0.75 7/8	0.60 3/4	0.60 3/4	0.65 7/8	0.65 7/8	0.70 7/8	0.70 7/8	0.75 7/8
B	m yds	1.85 2 1/8	1.85 2 1/8	1.90 2 1/8	2.00 2 1/4	2.30 2 3/8	2.35 2 3/8	2.45 2 3/4	1.60 1 3/4	1.60 1 3/4	1.65 1 7/8	1.75 2	2.00 2 1/4	2.05 2 3/8	2.10 2 3/8
B Garniturstoff • Tissu garniture Contrasting fabric	m yds	0.25 3/8	0.25 3/8	0.25 3/8	0.25 3/8	0.25 3/8	0.25 3/8	0.25 3/8	0.25 3/8	0.25 3/8	0.25 3/8	0.25 3/8	0.25 3/8	0.25 3/8	0.25 3/8
AB Hose • Pantalon • Pants	m yds	0.80 7/8	0.80 7/8	0.85 1	0.85 1	0.95 1 1/8	1.30 1 1/2	1.35 1 1/2	0.80 7/8	0.80 7/8	0.85 1	0.85 1	0.90 1	0.90 1	0.90 1

→ mit Richtung • avec sens • with nap

★ ohne Richtung • sans sens • without nap