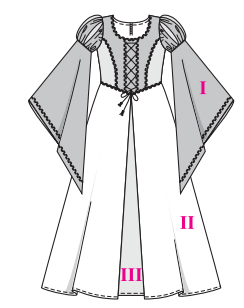
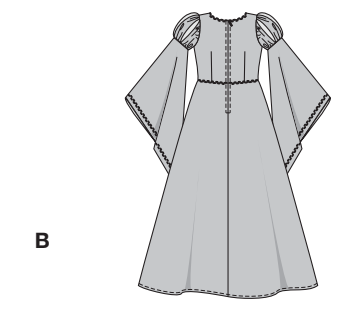
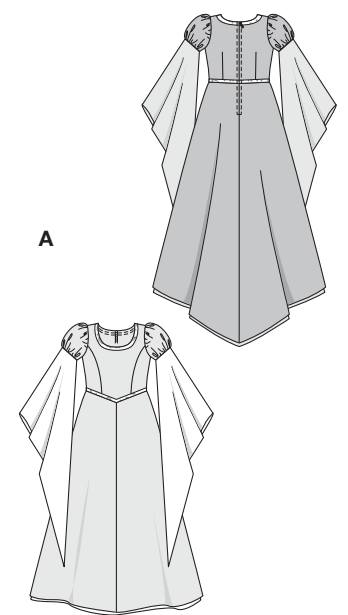


Größen • Tailles • Sizes
 Eur. : **116 - 152**
 US : **6 - 12**



FEE, BURGPRINZESSIN

●●●●
 mittel, moins facile, average.
AB: körpernah, ajusté,
 fitted.

Stoffempfehlung: A: Trans-
 parente Stoffe, Spitzenstof-
 fe; Futter: Satin; B: Brokat,
 Effektstoffe; B II: auch Samt.

Tissus conseillés: A: tissu
 transparent, tissu dentelle;
 Doublure: satin; B: brocart,
 tissu à effets; B II: aussi
 velours.

Recommended fabrics:
 A: transparent fabrics, lace
 fabric; Lining: satin; B: bro-
 cade, special effect fabrics;
 B II: velvet as well.

FEE, PRINCESSE MEDIEVALE • FAIRY, CASTLE PRINCESS

Größen Tailles • Sizes	Eur. US	114 cm / 45 ins						140 cm / 55 ins							
		116 6	122 7	128 8	134 9	140 10	146 11	152 12	116 6	122 7	128 8	134 9	140 10	146 11	152 12
A	m yds							2.60 2 ⁷ / ₈	2.75 3 ¹ / ₈	2.95 3 ³ / ₈	3.15 3 ¹ / ₂	3.35 3 ³ / ₄	3.55 4	3.75 4 ¹ / ₄	
A Futter • Doublure Lining	m yds	1.75 2	1.90 2 ¹ / ₈	2.05 2 ³ / ₈	2.20 2 ¹ / ₂	2.70 3	2.85 3 ¹ / ₄	3.00 3 ³ / ₈	1.60 1 ¹ / ₄	1.70 1 ⁷ / ₈	1.80 2	2.00 2 ¹ / ₄	2.10 2 ¹ / ₂	2.15 2 ¹ / ₂	2.30 2 ⁵ / ₈
B I	m yds	1.25 1 ¹ / ₂	1.30 1 ¹ / ₂	1.35 1 ⁵ / ₈	1.40 1 ⁵ / ₈	1.45 1 ³ / ₄	1.50 1 ³ / ₄	1.55 1 ³ / ₄	1.05 1 ¹ / ₄	1.10 1 ¹ / ₄	1.15 1 ¹ / ₈	1.20 1 ¹ / ₈	1.25 1 ¹ / ₂	1.30 1 ¹ / ₂	1.30 1 ¹ / ₂
B II	m yds	1.50 1 ³ / ₄	1.60 1 ³ / ₄	1.70 1 ⁷ / ₈	1.80 2	2.10 2 ¹ / ₈	2.30 2 ³ / ₈	2.70 3	1.50 1 ³ / ₄	1.60 1 ³ / ₄	1.70 1 ⁷ / ₈	1.75 2	1.85 2 ¹ / ₈	1.95 2 ¹ / ₄	2.00 2 ¹ / ₄
B III	m yds	2.40 2 ³ / ₈	2.55 2 ⁷ / ₈	2.80 3 ¹ / ₈	2.90 3 ¹ / ₄	3.10 3 ¹ / ₂	3.30 3 ³ / ₈	3.60 4	1.95 2 ¹ / ₄	2.15 2 ¹ / ₂	2.35 2 ⁵ / ₈	2.55 2 ⁷ / ₈	2.90 3 ¹ / ₄	3.00 3 ³ / ₈	3.10 3 ¹ / ₂

→ mit Richtung • avec sens • with nap

★ ohne Richtung • sans sens • without nap

