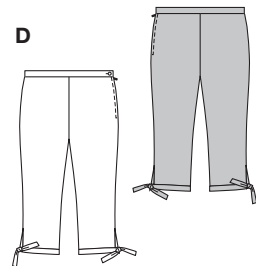
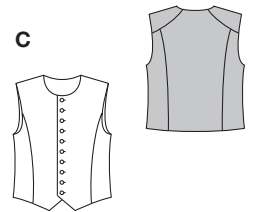
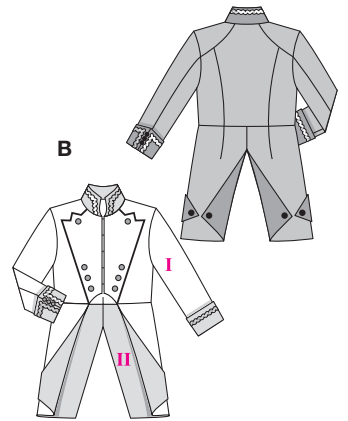
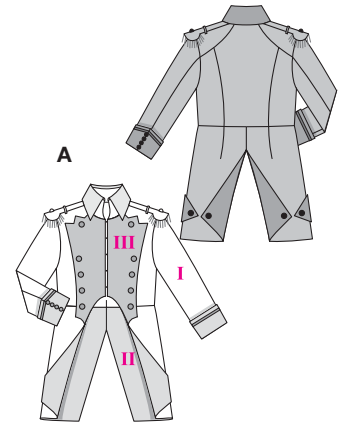


Größen • Tailles • Sizes
 Eur. : **46 - 58**
 US : **36 - 48**



NAPOLEON



mittel, moins facile, average.

AB: normal weit, semi-ajusté, semi-fitted; **Schulter**

Epaule • Shoulder: normal, normale, average width.

C: körpernah, ajusté, fitted.

D: eng anliegend, très ajusté, close fitting.

Stoffempfehlung:

ABC: Wollstoffe, Gabardine;

D: Stretchstoffe; E: Filz.

Tissus conseillés:

ABC: tissus en laine, gabardine; D: tissus

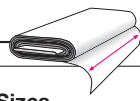
extensibles; E: feutrine.

Recommended fabrics:

ABC: wools, gabardine;

D: stretchable fabrics;

E: felt.



Größen Tailles • Sizes	Eur. US	114 cm / 45 ins								140 cm / 55 ins							
		46 36	48 38	50 40	52 42	54 44	56 46	58 48	46 36	48 38	50 40	52 42	54 44	56 46	58 48		
A I	m yds	2.05 2 ³ / ₈	2.05 2 ³ / ₈	2.05 2 ³ / ₈	2.35 2 ⁵ / ₈	2.40 2 ⁵ / ₈	2.45 2 ³ / ₄	2.45 2 ³ / ₄	1.75 2	1.75 2	1.75 2	1.75 2	1.85 2 ¹ / ₈	1.90 2 ¹ / ₈	1.90 2 ¹ / ₈		
A II	m yds	1.10 1 ¹ / ₄	1.10 1 ¹ / ₄	1.10 1 ¹ / ₄	1.10 1 ¹ / ₄	1.15 1 ³ / ₈	1.25 1 ¹ / ₂	1.25 1 ¹ / ₂	0.95 1 ¹ / ₈	0.95 1 ¹ / ₈	0.95 1 ¹ / ₈	0.95 1 ¹ / ₈	0.95 1 ¹ / ₈	0.95 1 ¹ / ₈	0.95 1 ¹ / ₈		
A III	m yds	0.60 3/4	0.60 3/4	0.60 3/4	0.60 3/4	0.60 3/4	0.60 3/4	0.60 3/4	0.60 3/4	0.60 3/4	0.60 3/4	0.60 3/4	0.60 3/4	0.60 3/4	0.60 3/4		
B I	m yds	2.15 2 ¹ / ₂	2.15 2 ¹ / ₂	2.15 2 ¹ / ₂	2.30 2 ⁵ / ₈	2.30 2 ⁵ / ₈	2.35 2 ⁵ / ₈	2.35 2 ⁵ / ₈	1.65 1 ⁷ / ₈	1.65 1 ⁷ / ₈	1.70 1 ⁷ / ₈	1.70 1 ⁷ / ₈	1.75 2	1.80 2	1.80 2		
B II	m yds	1.10 1 ¹ / ₄	1.10 1 ¹ / ₄	1.10 1 ¹ / ₄	1.10 1 ¹ / ₄	1.35 1 ⁵ / ₈	1.35 1 ⁵ / ₈	1.35 1 ⁵ / ₈	0.95 1 ¹ / ₈	0.95 1 ¹ / ₈	0.95 1 ¹ / ₈	0.95 1 ¹ / ₈	0.95 1 ¹ / ₈	0.95 1 ¹ / ₈	0.95 1 ¹ / ₈		
AB Futter • Doublure Lining	m yds	1.30 1 ¹ / ₂	1.30 1 ¹ / ₂	1.30 1 ¹ / ₂	1.30 1 ¹ / ₂	1.35 1 ⁵ / ₈	1.50 1 ³ / ₄	1.50 1 ³ / ₄	1.15 1 ³ / ₈	1.15 1 ³ / ₈	1.15 1 ³ / ₈	1.15 1 ³ / ₈	1.20 1 ³ / ₈	1.25 1 ³ / ₈	1.25 1 ³ / ₈		
C Stoff + Futter Tissu + doublure Fabric + lining	m yds	1.05 1 ¹ / ₄	1.05 1 ¹ / ₄	1.05 1 ¹ / ₄	1.05 1 ¹ / ₄	1.05 1 ¹ / ₄	1.10 1 ¹ / ₄	1.10 1 ¹ / ₄	0.75 7/8	0.75 7/8	0.75 7/8	0.95 1 ¹ / ₈	0.95 1 ¹ / ₈	1.00 1 ¹ / ₈	1.00 1 ¹ / ₈		
D	m yds	1.65 1 ⁷ / ₈	1.65 1 ⁷ / ₈	1.65 1 ⁷ / ₈	1.70 1 ⁷ / ₈	1.70 1 ⁷ / ₈	1.75 2	1.75 2	1.15 1 ³ / ₈	1.15 1 ³ / ₈	1.45 1 ³ / ₄	1.45 1 ³ / ₄	1.55 1 ³ / ₄	1.75 2	1.75 2		
Kopfumfang Tour de tête Head circumference	Eur. US	114 cm / 45 ins								140 cm / 55 ins							
E	m yds	0.90 1	0.90 1	0.95 1 ¹ / ₈	0.95 1 ¹ / ₈	0.90 1	0.90 1	0.95 1 ¹ / ₈	0.90 1	0.90 1	0.95 1 ¹ / ₈	0.95 1 ¹ / ₈	0.95 1 ¹ / ₈	0.95 1 ¹ / ₈	0.95 1 ¹ / ₈		

→ mit Richtung
avec sens • with nap

* ohne Richtung
sans sens • without nap



2471
★