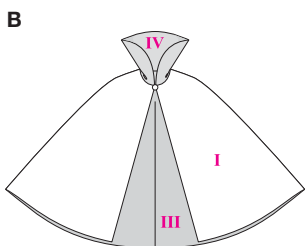
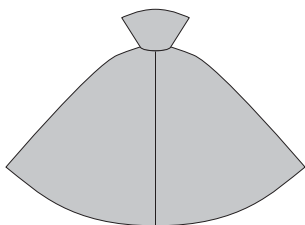
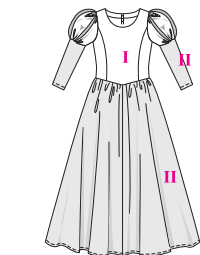
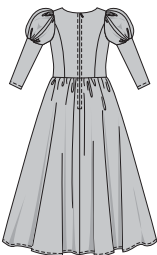
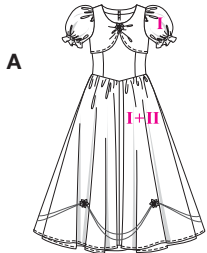
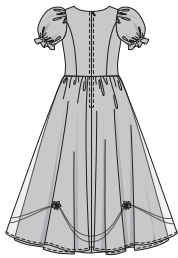


Größen • Tailles • Sizes
 Eur.: **104 - 134**
 US: **4 - 9**



PRINZESSIN, SCHNEEWITTCHEN



leicht, facile, easy.

AB: normal weit, semi-ajusté, semi-fitted.

Stoffempfehlung: A I: Organza; A II + B: Faschingsseide, Faschings satin.

Tissus conseillés: A I: organza; A II + B: soie carnaval, satin carnaval.

Recommended fabrics: A I: organza; A II + B: lining fabric, lining satin.

★ ohne Richtung
 sans sens • without nap

PRINCESSE, BLANCHE-NEIGE • PRINCESS, SNOW WHITE

Größen Tailles • Sizes	Eur. US	114 cm / 45 ins							140 cm / 55 ins						
		104 4	110 5	116 6	122 7	128 8	134 9	104 4	110 5	116 6	122 7	128 8	134 9		
A I	m yds	2.15 2 1/2	2.30 2 5/8	2.55 2 7/8	2.90 3 1/4	3.20 3 1/2	3.55 4	1.65 1 7/8	1.75 2	2.15 2 1/2	2.25 2 5/8	2.35 2 3/4	2.45 2 3/4		
A II	m yds	1.90 2 1/8	2.00 2 1/4	2.25 2 5/8	2.75 3 1/8	3.20 3 1/2	3.55 4	1.45 1 3/4	1.55 1 3/4	2.00 2 1/4	2.10 2 1/8	2.20 2 1/2	2.30 2 5/8		
B I	m yds	2.00 2 1/4	2.10 2 3/8	2.25 2 5/8	2.35 2 3/8	2.45 2 3/4	2.60 2 7/8	1.50 1 3/4	1.55 1 3/4	1.65 1 7/8	1.95 2 1/4	2.05 2 1/2	2.20 2 1/2		
B II	m yds	1.95 2 1/4	2.10 2 3/8	2.30 2 5/8	2.75 3 1/8	3.20 3 1/2	3.55 4	1.40 1 3/8	1.50 1 3/4	1.65 1 7/8	1.90 2 1/4	2.15 2 1/2	2.40 2 3/8		
B III	m yds	1.45 1 3/4	1.55 1 3/4	1.70 1 7/8	1.80 2	1.95 2 1/4	2.15 2 1/2	1.20 1 1/8	1.25 1 1/2	1.35 1 3/8	1.50 1 3/4	1.60 1 3/4	1.70 1 7/8		
B IV	m yds	0.35 1/2	0.35 1/2	0.35 1/2	0.35 1/2	0.35 1/2	0.35 1/2	0.35 1/2	0.35 1/2	0.35 1/2	0.35 1/2	0.35 1/2	0.35 1/2		