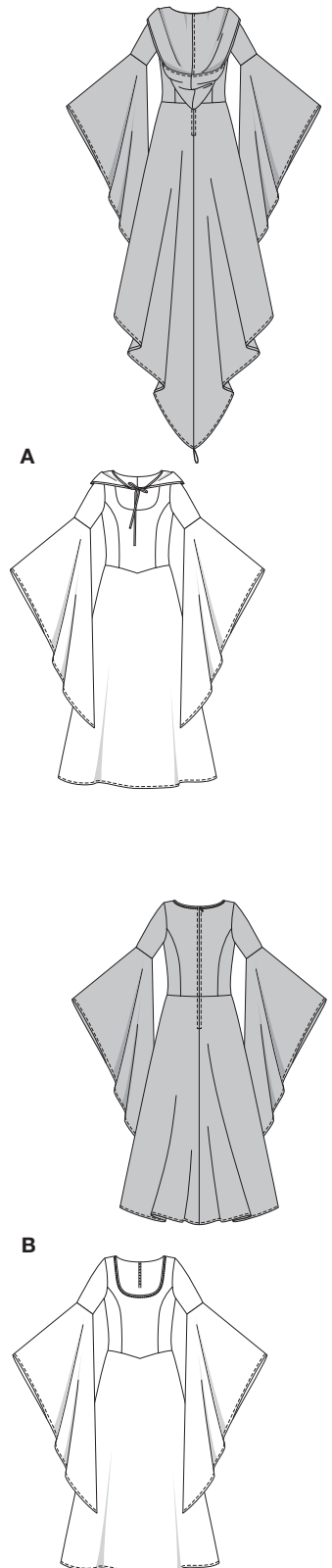


Größen • Tailles • Sizes  
 Eur. : **36 - 46**  
 US : **10 - 20**



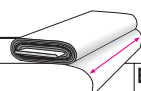
mittel, moins facile, average.

**AB:** eng anliegend, très ajusté, close fitting.

**Stoffempfehlung:** Transparente Stoffe, Spitzenstoff, Georgette.

**Tissus conseillés:** tissu transparent, tissu dentelle, georgette.

**Recommended fabrics:** transparent fabric, lace fabric, georgette.



### FEE • FAIRY

		140 cm / 55 ins						150 cm / 59 ins					
Größen Tailles • Sizes	Eur. US	36 10	38 12	40 14	42 16	44 18	46 20	36 10	38 12	40 14	42 16	44 18	46 20
<b>A</b>	m yds	5.50 6 1/8	5.60 6 1/8	5.60 6 1/8	5.70 6 1/4	5.75 6 3/8	5.75 6 3/8	5.30 5 7/8	5.30 5 7/8	5.30 5 7/8	5.30 5 7/8	5.30 5 7/8	5.30 5 7/8
<b>A Futter • Doublure Lining</b>	m yds	4.60 5 1/8	4.60 5 1/8	4.60 5 1/8	4.60 5 1/8	4.60 5 1/8	4.60 5 1/8						
<b>B</b>	m yds	4.50 5	4.50 5	4.50 5	4.55 5 1/8	4.60 5 1/8	4.70 5 1/4	4.00 4 3/8	4.05 4 1/2	4.05 4 1/2	4.10 4 1/2	4.20 4 5/8	4.20 4 5/8
<b>B Futter • Doublure Lining</b>	m yds	3.50 3 7/8	3.50 3 7/8	3.50 3 7/8	3.50 3 7/8	3.50 3 7/8	3.50 3 7/8						

★ ohne Richtung • sans sens • without nap

