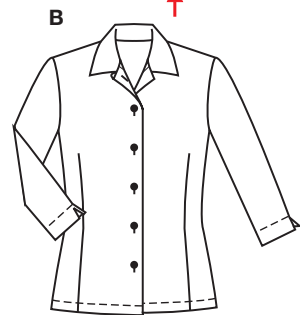
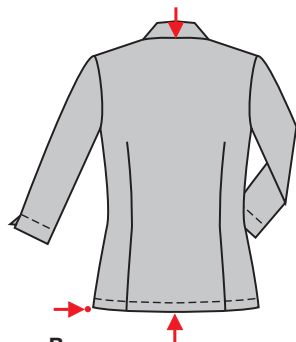
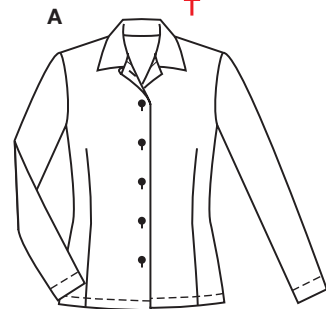
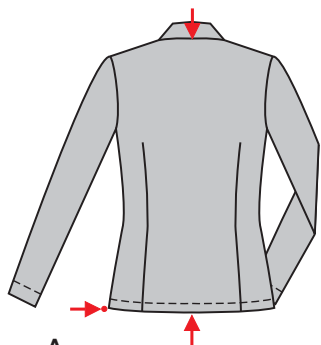


Größen • Tailles • Sizes  
 Eur.: **34 - 46**  
 US: **8 - 20**



AB 61 - 64 cm  
 24" to 25 1/4"

AB 99 - 123 cm  
 39" to 48 1/2"



## BLUSE • BLOUSE • BLUSA



leicht, facile, easy, fácil.

AB: normal weit, semi-ajusté, semi-fitted; **Schulter Epaule • Shoulder:** normal, normale, average width.

**Stoffempfehlung:** Popeline, Baumwollstoffe, Flanell, Taft.

**Tissus conseillés:** popeline, tissu en coton, flanelle, taffetas.

Größen Tailles • Sizes	Eur. US	114 cm / 45 ins						140 cm / 55 ins							
		34	36	38	40	42	44	46	34	36	38	40	42	44	46
A	m yds	1.55 1 3/4	1.55 1 3/4	1.65 1 7/8	1.75 2	1.90 2 1/8	2.10 2 3/8	2.10 2 3/8	1.40 1 1/8	1.45 1 3/4	1.45 1 3/4	1.45 1 3/4	1.45 1 3/4	1.50 1 3/4	1.50 1 3/4
B	m yds	1.50 1 3/4	1.60 1 3/4	1.75 2	1.80 2	1.85 2 1/8	1.90 2 1/8	1.90 2 1/8	1.25 1 1/2	1.25 1 1/2	1.30 1 1/2	1.30 1 1/2	1.35 1 5/8	1.40 1 5/8	1.40 1 5/8

→ mit Richtung • avec sens • with nap

★ ohne Richtung • sans sens • without nap

**Recommended fabrics:** poplin, cottons, flannel, taffeta.