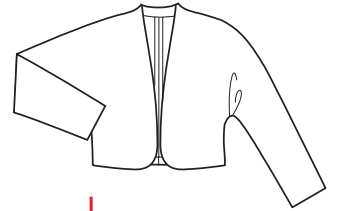
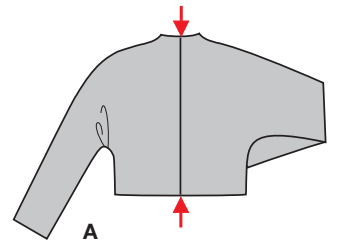
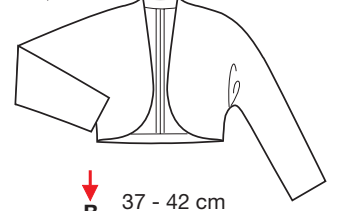
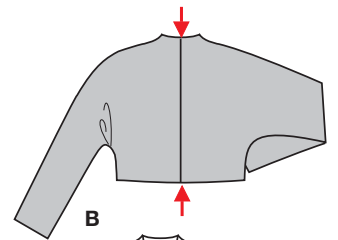


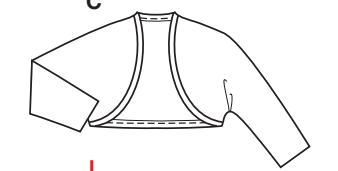
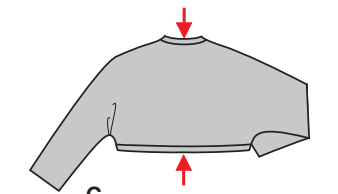
Größen • Tailles • Sizes
Eur.: **32 - 46**
US: **6 - 20**



A
42 - 47 cm
16 1/2" to 18 1/2"



B
37 - 42 cm
14 1/2" to 16 1/2"

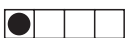


C
29 - 34 cm
11 1/2" to 13 1/2"

BOLERO

Größen Tailles • Sizes	Eur. US	114 cm / 45 ins								140 cm / 55 ins							
		32	34	36	38	40	42	44	46	32	34	36	38	40	42	44	46
A	m yds	1.60 1 3/4	1.60 1 3/4	1.65 1 7/8	1.65 1 7/8	1.75 2	1.75 2	1.80 2	1.80 2	1.35 1 5/8	1.35 1 5/8	1.40 1 5/8	1.40 1 5/8	1.45 1 3/4	1.45 1 3/4	1.50 1 3/4	1.50 1 3/4
B	m yds	1.40 1 5/8	1.40 1 5/8	1.45 1 3/4	1.45 1 3/4	1.55 1 3/4	1.55 1 3/4	1.65 1 7/8	1.65 1 7/8	1.15 1 3/8	1.15 1 3/8	1.25 1 1/2	1.25 1 1/2	1.30 1 1/2	1.30 1 1/2	1.40 1 5/8	1.40 1 5/8
C	m yds									0.80 7/8	0.80 7/8	0.80 7/8	0.80 7/8	0.85 1	0.85 1	0.85 1	0.85 1

→ mit Richtung • avec sens • with nap



sehr leicht, très facile, very easy, muy fácil.

Stoffempfehlung: Nur querelastische Stoffe; AB: Samt, Jacquard; C: Strickstoffe.

Tissus conseillés: uniquement matières extensibles; AB: velours, jacquard; C: tissus tricot.

Recommended fabrics: use crosswise stretch fabrics only; AB: velvet, jacquard; C: sweater knits.

MIT NAHTZUGABE STRETCH



AVEC COUTURE SEAM ALLOWANCE ELASTIC

2573
★