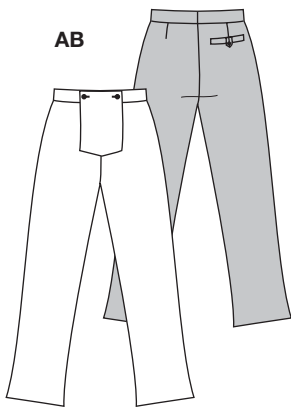
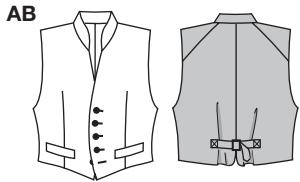
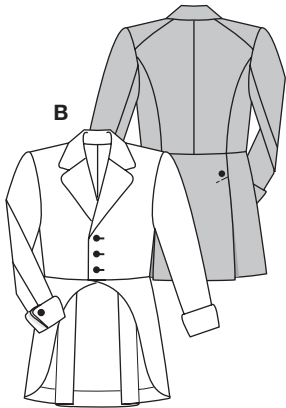
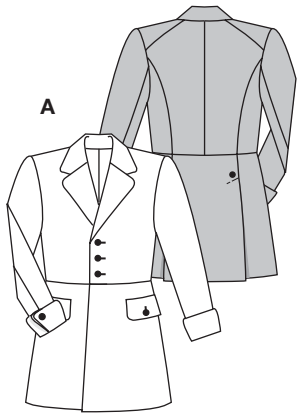


Größen • Tailles • Sizes
 Eur.: **44 - 60**
 US: **34 - 50**



MIT NAHTZUGABE



2767



A



B



fortgeschritten, plus difficile, advanced.

AB: normal weit, semi-ajusté, semi-fitted.

Stoffempfehlung: Jacke A: Samt; Hose AB und Jacke B: Flanell, leichte Wollstoffe; Weste: Jacquardstoffe; Schal: Satin.

Tissus conseillés: Veste A: velours; Pantalon AB et Veste B: flanelle, tissus légers en laine; Gilet: jacquard; Foulard: satin.

Recommended fabrics: Jacket A: velvet; Pants AB and Jacket B: flannel, light-wt. wools; Vest: jacquard; Scarf: satin.

→ mit Richtung
 avec sens • with nap



HISTORY 1848

Größen Tailles • Sizes	Eur. US	44 34	46 36	48 38	50 40	52 42	54 44	56 46	58 48	60 50
AB Hose • Pantalon • Pants	150 cm 59 ins	m yds	1.55 1 ³ / ₄ →	1.55 1 ³ / ₄ →	1.55 1 ³ / ₄ →	1.80 2 →	2.15 2 ¹ / ₂ →	2.15 2 ¹ / ₂ →	2.25 2 ² / ₈ →	2.25 2 ² / ₈ →
A Weste • Gilet Vest	90 cm 36 ins	m yds	1.45 1 ³ / ₄ →	1.45 1 ³ / ₄ →	1.45 1 ³ / ₄ →	1.50 1 ³ / ₄ →	1.70 1 ⁷ / ₈ →	1.70 1 ⁷ / ₈ →	1.75 2 →	1.75 2 →
B Weste • Gilet Vest	140 cm 55 ins	m yds	1.00 1 ¹ / ₈ →	1.00 1 ¹ / ₈ →	1.00 1 ¹ / ₈ →	1.00 1 ¹ / ₈ →	1.05 1 ¹ / ₈ →	1.05 1 ¹ / ₈ →	1.15 1 ³ / ₈ →	1.15 1 ³ / ₈ →
AB Futter (Weste) Doublure (gilet) Lining (vest)	140 cm 55 ins	m yds	0.65 ⁷ / ₈	0.65 ⁷ / ₈	0.65 ⁷ / ₈	0.65 ⁷ / ₈	0.65 ⁷ / ₈	0.65 ⁷ / ₈	0.65 ⁷ / ₈	0.65 ⁷ / ₈
A Jacke • Veste Jacket	150 cm 59 ins	m yds	2.75 3 ³ / ₈ →	2.75 3 ³ / ₈ →	2.75 3 ³ / ₈ →	2.80 3 ³ / ₈ →	2.80 3 ³ / ₈ →	2.80 3 ³ / ₈ →	2.85 3 ³ / ₈ →	2.85 3 ³ / ₈ →
A Futter (Jacke) Doublure (veste) Lining (jacket)	140 cm 55 ins	m yds	1.75 2	1.75 2	1.75 2	1.75 2	1.95 2 ¹ / ₄	1.95 2 ¹ / ₄	2.00 2 ¹ / ₄	2.00 2 ¹ / ₄
B Jacke • Veste Jacket	140 cm 55 ins	m yds	2.65 3 →	2.65 3 →	2.65 3 →	2.65 3 →	2.85 3 ³ / ₄ →	2.85 3 ³ / ₄ →	3.05 3 ³ / ₂ →	3.05 3 ³ / ₂ →
B Futter (Jacke) Doublure (veste) Lining (jacket)	140 cm 55 ins	m yds	1.50 1 ³ / ₄	1.50 1 ³ / ₄	1.50 1 ³ / ₄	1.50 1 ³ / ₄	1.70 1 ⁷ / ₈	1.70 1 ⁷ / ₈	1.70 1 ⁷ / ₈	1.70 1 ⁷ / ₈
AB Schal • Foulard Scarf	150 cm 59 ins	m yds	0.45 ⁵ / ₈ →	0.45 ⁵ / ₈ →	0.45 ⁵ / ₈ →	0.45 ⁵ / ₈ →	0.45 ⁵ / ₈ →	0.45 ⁵ / ₈ →	0.45 ⁵ / ₈ →	0.45 ⁵ / ₈ →