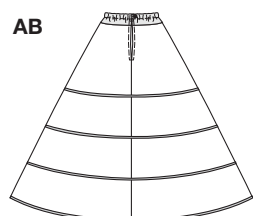
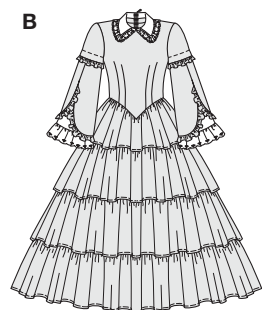
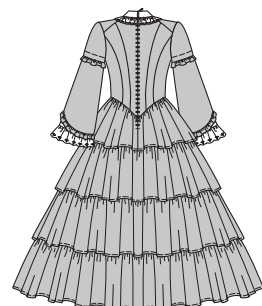
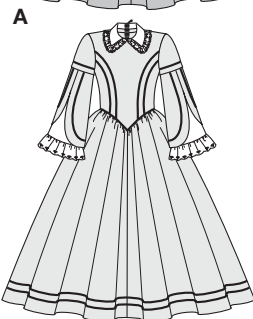


Größen • Tailles • Sizes
 Eur. : **36 - 52**
 US : **10 - 26**



MIT NAHTZUGABE



2768



HISTORY 1848

Größen Tailles • Sizes	Eur. US	36 10	38 12	40 14	42 16	44 18	46 20	48 22	50 24	52 26
A 112 cm / 44 1/4" ins	m yds	5.95 6 5/8 ★	5.95 6 5/8 ★	6.05 6 3/4 ★	6.05 6 3/4 ★	6.30 6 7/8 ★	6.30 6 7/8 ★	6.40 7 ★	6.75 7 1/2 ★	6.75 7 1/2 ★
B 115 cm / 45 1/4" ins	m yds	10.50 11 1/2 ★	10.50 11 1/2 ★	10.55 11 5/8 ★	10.55 11 5/8 ★	10.60 11 5/8 ★	10.60 11 5/8 ★	11.10 12 1/8 ★	11.20 12 1/4 ★	11.40 12 7/8 ★
AB 110 cm / 43 1/2" ins	m yds	1.00 1 1/8 ★	1.00 1 1/8 ★	1.00 1 1/8 ★	1.00 1 1/8 ★	1.00 1 1/8 ★	1.00 1 1/8 ★	1.00 1 1/8 ★	1.00 1 1/8 ★	1.00 1 1/8 ★
AB 140 cm / 55" ins	m yds	2.65 3 ★	2.65 3 ★	2.65 3 ★	2.65 3 ★	2.80 3 1/8 ★	2.80 3 1/8 ★	2.80 3 1/8 ★	2.80 3 1/8 ★	2.95 3 3/8 ★

★ ohne Richtung • sans sens • without nap



fortgeschritten, plus difficile, advanced.

AB: körpernah, ajusté, fitted.

Stoffempfehlung: Kleid: Renforcé; Garniturstoff: weißer Batist; Reifrock: durchsichtiger Nylon.

Tissus conseillés: Robe: renforcé; Tissu garniture: batiste blanc; Crinoline: nylon transparent.

Recommended fabrics:

Dress: cotton broadcloth; Reifrock: Contrasting fabric: white batiste; Crinoline: nylonsheer.