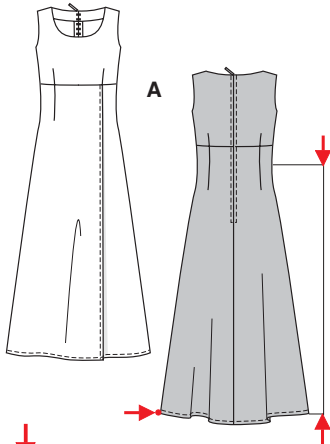
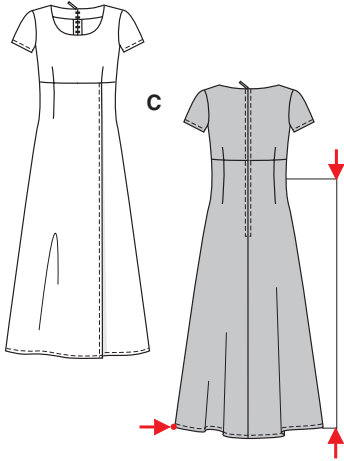


Größen • Tailles • Sizes
 Eur.: **34 - 44**
 US: **8 - 18**



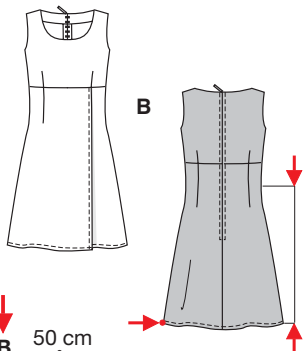
AC 90 cm
36"

AC 124 - 144 cm
49" to 56 3/4"



B 50 cm
19 3/4"

B 106 - 126 cm
41 3/4" to 49 3/4"



leicht, facile, easy, fácil.

ABC: körpernah, ajusté, fitted; **Schulter • Epaule**
Shoulder C: normal, normale, average width.

Stoffempfehlung: Viskose, Leinen, Baumwollstoffe.
Tissus conseillés: viscose, lin, tissus en coton.

Recommended fabrics: viscose rayon, linen, cottons.

KLEID • ROBE • DRESS • VESTIDO

Größen Tailles • Sizes	Eur. US	114 cm / 45 ins						140 cm / 55 ins						150 cm / 59 ins					
		34	36	38	40	42	44	34	36	38	40	42	44	34	36	38	40	42	44
A	m	2.10	2.30	2.45	2.60	3.10	3.10	2.10	2.10	2.10	2.10	2.10	2.10	2.10	2.10	2.10	2.10	2.10	2.10
	yds	2 3/8	2 5/8	2 5/8	2 5/8	2 5/8	2 5/8	2 3/8	2 3/8	2 3/8	2 3/8	2 3/8	2 3/8	2 3/8	2 3/8	2 3/8	2 3/8	2 3/8	2 3/8
B	m	1.50	1.50	1.50	1.65	1.70	1.90	1.45	1.45	1.45	1.45	1.45	1.45	1.45	1.45	1.45	1.45	1.45	1.45
	yds	1 3/4	1 3/4	1 3/4	1 7/8	1 7/8	2 1/8	1 3/4	1 3/4	1 3/4	1 3/4	1 3/4	1 3/4	1 3/4	1 3/4	1 3/4	1 3/4	1 3/4	1 3/4
C	m	2.20	2.50	2.50	2.60	3.10	3.10	2.10	2.10	2.10	2.10	2.10	2.10	2.10	2.10	2.10	2.10	2.10	2.10
	yds	2 1/2	2 3/4	2 3/4	2 7/8	3 1/2	3 1/2	2 3/8	2 3/8	2 3/8	2 3/8	2 3/8	2 3/8	2 3/8	2 3/8	2 3/8	2 3/8	2 3/8	2 3/8

→ mit Richtung • avec sens • with nap

★ ohne Richtung • sans sens • without nap

2933