

Größen • Tailles • Sizes

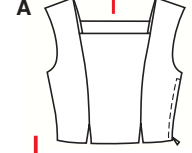
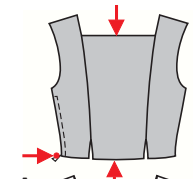
Eur.: **34 - 44**
US: **8 - 18**



A

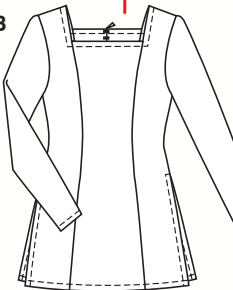
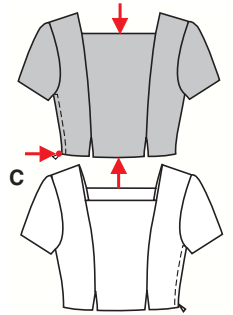


B



AC 33 - 36 cm
13" to 14 1/4"

AC 78 - 98 cm
30 3/4" to 38 3/4"



B 69 - 72 cm
27 1/4" to 28 1/2"

B 112 - 132 cm
44 1/4" to 52"

BLUSE • BLOUSE • BLUSA

Größen Tailles • Sizes	Eur. US	90 cm / 36 ins						114 cm / 45 ins						140 cm / 55 ins					
		34	36	38	40	42	44	34	36	38	40	42	44	34	36	38	40	42	44
A	m yds	0.90 1	0.95 1 1/8	0.95 1 1/8	0.95 1 1/8	1.00 1 1/8	1.00 1 1/8	0.75 3/8	0.95 1 1/8	0.95 1 1/8	0.95 1 1/8	1.00 1 1/8	1.00 1 1/8	0.65 2/8	0.65 2/8	0.65 2/8	0.65 2/8	0.65 2/8	0.65 2/8
B	m yds	2.20 2 1/2	2.25 2 5/8	2.25 2 5/8	2.25 2 5/8	2.30 2 5/8	2.30 2 5/8	1.55 1 3/4	1.60 1 3/4	1.60 1 3/4	1.60 1 3/4	1.65 1 3/4	1.65 1 3/4	1.45 1 3/4	1.50 1 3/4	1.50 1 3/4	1.50 1 3/4	1.50 1 3/4	1.50 1 3/4
C	m yds	1.15 1 1/8	1.20 1 3/8	1.20 1 3/8	1.20 1 3/8	1.25 1 1/2	1.25 1 1/2	0.90 1	0.95 1 1/8	0.95 1 1/8	0.95 1 1/8	1.00 1 1/8	1.00 1 1/8	0.80 2/8	0.80 2/8	0.80 2/8	0.80 2/8	0.80 2/8	0.80 2/8

→ mit Richtung • avec sens • with nap

★ ohne Richtung • sans sens • without nap



leicht, facile, easy, fácil.

ABC: körpernah, ajusté, fitted; **Schulter • Epauole** **Shoulder:** normal, normale, average width.

Stoffempfehlung: Douppionseide, Leinen, Baumwollstoffe; B: Jersey.

Tissus conseillés: soie shantung, lin, tissus en coton; B: jersey.

Recommended fabrics: shantung silk, linen, cottons; B: jersey.