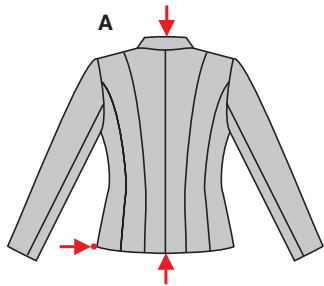
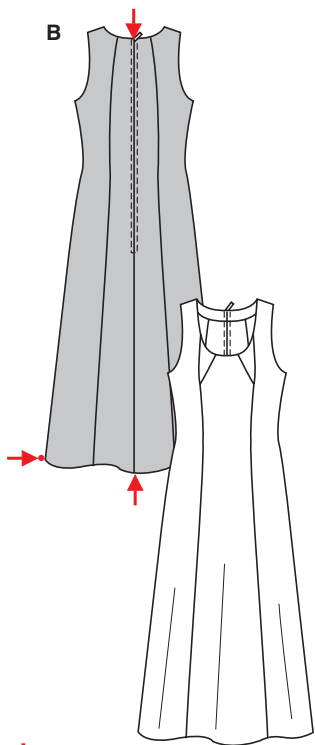


Größen • Tailles • Sizes  
Eur. : **36 - 42**  
US : **10 - 16**



↓  
**A** 52 - 54 cm  
20½" to 21¼"

↑  
**A** 102 - 114 cm  
40¼" to 45"



↓  
**B** 126 - 128 cm  
49¾" to 50½"

↑  
**B** 154 - 166 cm  
60¾" to 65½"



**JACKE & KLEID**



mittel, moins facile, average, dificultad media.

**AB:** körpernah, ajusté, fitted;  
**Schulter • Epaule • Shoulder A:** normal, normale, average width.

**Stoffempfehlung:** Fließende Stoffe, z.B. Gabardine, Viskose-Leinen, Cupro.

**Tissus conseillés:** tissus fluides, par ex. gabardine, lin en viscose, cupro.

**Recommended fabrics:** supple fabrics, e.g. gabardine, viscose rayon linen, cupro.

**VESTE & ROBE • JACKET & DRESS • CHAQUETA + VESTIDO**

| Größen<br>Tailles • Sizes                | Eur.<br>US | 114 cm / 45 ins |            |            |            | 140 cm / 55 ins |            |            |            | 150 cm / 59 ins |            |            |            |
|--|------------|-----------------|------------|------------|------------|-----------------|------------|------------|------------|-----------------|------------|------------|------------|
|  |            | 36<br>10        | 38<br>12   | 40<br>14   | 42<br>16   | 36<br>10        | 38<br>12   | 40<br>14   | 42<br>16   | 36<br>10        | 38<br>12   | 40<br>14   | 42<br>16   |
| <b>A</b>                                 | m<br>yds   | 1.90<br>2⅞      | 1.90<br>2⅞ | 1.90<br>2⅞ | 1.90<br>2⅞ | 1.60<br>1¾      | 1.60<br>1¾ | 1.60<br>1¾ | 1.60<br>1¾ | 1.50<br>1¾      | 1.50<br>1¾ | 1.50<br>1¾ | 1.50<br>1¾ |
| <b>A</b> Futter • Dou-<br>blure • Lining | m<br>yds   | 1.45<br>1¾      | 1.45<br>1¾ | 1.45<br>1¾ | 1.45<br>1¾ | 1.25<br>1½      | 1.25<br>1½ | 1.25<br>1½ | 1.25<br>1½ |                 |            |            |            |
| <b>B</b>                                 | m<br>yds   | 2.60<br>2⅞      | 2.60<br>2⅞ | 2.60<br>2⅞ | 2.60<br>2⅞ | 1.65<br>1⅞      | 1.65<br>1⅞ | 2.10<br>2⅞ | 2.10<br>2⅞ | 1.65<br>1⅞      | 1.65<br>1⅞ | 1.65<br>1⅞ | 1.65<br>1⅞ |

→ mit Richtung • avec sens • with nap

★ ohne Richtung • sans sens • without nap

**2974**