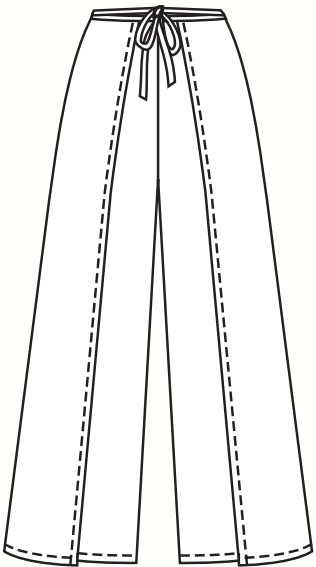
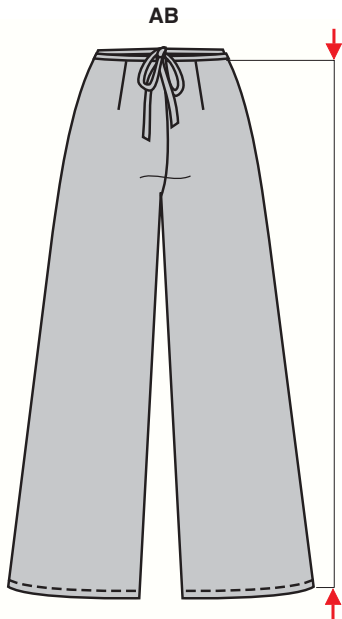
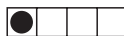


Größen • Tailles • Sizes

Eur.: **34 - 44**  
US: **8 - 18**



AB 102 - 105 cm  
40 1/4" to 41 1/2"



sehr leicht, très facile, very easy, muy fácil.

**AB:** normal weit, semi-ajusté, semi-fitted.

**Stoffempfehlung:**

Viskose, Krepfstoffe, Batist, Georgette.

**Tissus conseillés:** viscose, crêpe, batiste, georgette.

**Recommended fabrics:** viscose rayon, crepe fabric, batiste, georgette.



**HOSE • PANTALON • PANTS**

Größen Tailles • Sizes	Eur. US	114 cm / 45 ins						140 cm / 55 ins						150 cm / 59 ins					
		34	36	38	40	42	44	34	36	38	40	42	44	34	36	38	40	42	44
<b>A</b> längsgestreifter Stoff tissu à rayures verticales lengthwise striped fabric	m	2.40	2.50	2.55	2.65	2.65	2.75	2.25	2.30	2.40	2.50	2.50	2.60	2.25	2.30	2.40	2.50	2.50	2.60
	yds	2 5/8	2 3/4	2 7/8	3	3	3 1/8	2 5/8	2 5/8	2 5/8	2 3/4	2 3/4	2 5/8	2 5/8	2 5/8	2 5/8	2 3/4	2 3/4	2 5/8
<b>B</b>	m	2.40	2.40	3.35	3.90	3.90	3.90	2.25	2.25	2.25	2.30	2.30	2.25	2.25	2.25	2.25	2.30	2.30	2.30
	yds	2 5/8	2 5/8	3 3/4	4 1/4	4 1/4	4 1/4	2 5/8	2 5/8	2 5/8	2 5/8	2 5/8	2 5/8	2 5/8	2 5/8	2 5/8	2 5/8	2 5/8	2 5/8

★ ohne Richtung • sans sens • without nap

**2989**  
★