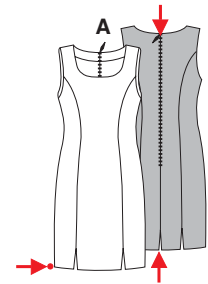
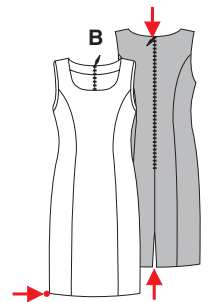


Größen • Tailles • Sizes
 Eur. : **36 - 46**
 US : **10 - 20**



↓
A 87 - 90 cm
 34 1/4" to 36"
 ↑

↻
A 89 - 109 cm
 35" to 43"



↓
B 94 - 97 cm
 37" to 38 1/4"
 ↑

↻
B 87 - 107 cm
 34 1/4" to 42 1/4"

**KLEID
 ROBE • DRESS
 VESTIDO**

leicht, facile, easy, fácil.

AB: körpernah, ajusté, fitted.

Stoffempfehlung: Leinen, Kreppstoffe, Baumwollstoffe.

Tissus conseillés: lin, crêpe, tissus en coton.

Recommended fabrics: linen, crepe fabric, cottons.

Größen Tailles • Sizes	Eur. US	90 cm / 36 ins						114 cm / 45 ins						140 cm / 55 ins					
		36 10	38 12	40 14	42 16	44 18	46 20	36 10	38 12	40 14	42 16	44 18	46 20	36 10	38 12	40 14	42 16	44 18	46 20
A	m yds	1.80 2	1.90 2 1/8	1.90 2 1/8	1.95 2 1/4	1.95 2 1/4	1.95 2 1/4	1.55 1 3/4	1.60 1 3/4	1.60 1 3/4	1.75 2	1.75 2	1.75 2	1.20 1 3/8	1.20 1 3/8	1.20 1 3/8	1.25 1 1/2	1.25 1 1/2	1.25 1 1/2
A Futter • Dou- blure • Lining	m yds						1.65 1 7/8	1.65 1 7/8	1.65 1 7/8	1.65 1 7/8	1.65 1 7/8	1.65 1 7/8	0.95 1 1/8	0.95 1 1/8	0.95 1 1/8	1.00 1 1/8	1.00 1 1/8	1.00 1 1/8	1.25 1 1/2
B	m yds	1.95 2 1/4	2.05 2 3/8	2.05 2 3/8	2.10 2 3/8	2.10 2 3/8	2.10 2 3/8	1.70 1 7/8	1.75 2	1.75 2	1.90 2 1/8	1.90 2 1/8	1.90 2 1/8	1.25 1 1/2	1.30 1 1/2	1.30 1 1/2	1.30 1 1/2	1.30 1 1/2	1.30 1 1/2
B Futter • Dou- blure • Lining	m yds						1.75 2	1.80 2	1.80 2	1.80 2	1.80 2	1.80 2	1.00 1 1/8	1.05 1 1/4	1.05 1 1/4	1.05 1 1/4	1.05 1 1/4	1.05 1 1/4	1.35 1 5/8

→ mit Richtung • avec sens • with nap

★ ohne Richtung • sans sens • without nap