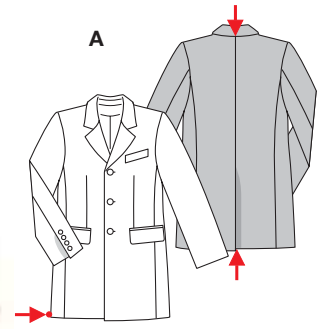
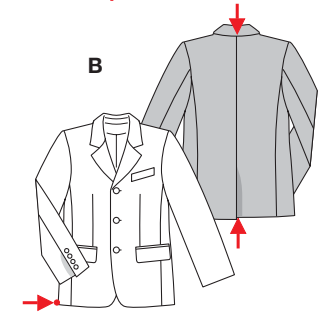


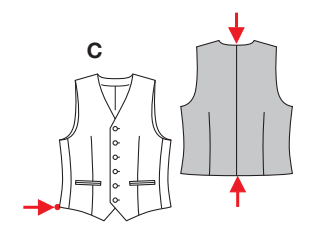
Größen • Tailles • Sizes
 Eur. : **44 - 60**
 US : **34 - 50**



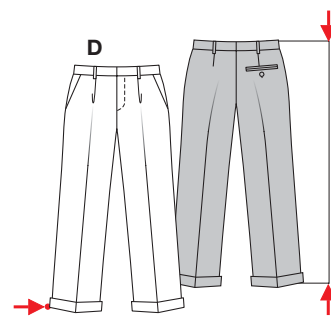
A
 91 - 98 cm
 36" to 38 3/4"



B
 78 - 85 cm
 30 3/4" to 33 1/2"
A B 100 - 139 cm
 39 1/2" to 54 3/4"



C
 56 - 61 cm
 22 1/4" to 24"
C 94 - 130 cm
 37" to 51 1/4"



D
 100 - 112 cm
 39 1/2" to 44 1/4"
D 47 - 55 cm
 18 1/2" to 21 3/4"

ANZUG + WESTE



fortgeschritten, plus difficile, advanced, difficil.

AB: normal weit, semi-ajusté, semi-fitted; **Schulter Epauale • Shoulder:** normal, normale, average width; **CD:** körpernah, ajusté, fitted.

Stoffempfehlung: Gabardine, leichte Wollstoffe, Leinen; C: auch Jacquard.

Tissus conseillés: gabardine, tissus en laine légers, lin; C: aussi jacquard.

Recommended fabrics: gabardine, lightwt. wools, linen; C: jacquard as well.

→ mit Richtung
 avec sens • with nap

* ohne Richtung
 sans sens • without nap

COMPLET + GILET • SUIT + VEST • CONJUNTO + CHALECO

Größen Tailles • Sizes	Eur. US	114 cm / 45 ins								140 cm / 55 ins									
		44 34	46 36	48 38	50 40	52 42	54 44	56 46	58 48	60 50	44 34	46 36	48 38	50 40	52 42	54 44	56 46	58 48	60 50
A	m yds	3.25 3 5/8	3.30 3 3/8	3.35 3 3/4	3.40 3 3/4	3.45 3 3/8	3.45 3 3/8	3.50 3 3/8	3.55 4	2.35 2 5/8	2.80 3 1/8	2.80 3 1/8	2.85 3 1/4	2.90 3 1/4	2.90 3 1/4	2.95 3 3/8	3.00 3 3/8	3.00 3 3/8	
A Futter • Doublure Lining	m yds	2.25 2 5/8	2.30 2 5/8	2.30 2 5/8	2.35 2 5/8	2.40 2 5/8	2.40 2 5/8	2.45 2 5/8	2.80 3 1/8	1.65 1 7/8	1.70 1 7/8	1.70 1 7/8	1.70 1 7/8	2.00 2 1/4	2.00 2 1/4	2.00 2 1/4	2.05 2 3/8	2.05 2 3/8	
B	m yds	3.00 3 3/8	3.05 3 1/2	3.10 3 1/2	3.10 3 1/2	3.15 3 1/2	3.15 3 1/2	3.20 3 1/2	3.25 3 3/8	2.25 2 5/8	2.60 2 7/8	2.65 2 7/8	2.65 2 7/8	2.70 3	2.70 3	2.75 3 1/8	2.75 3 1/8	2.75 3 1/8	
B Futter • Doublure Lining	m yds	1.85 2 1/8	1.85 2 1/8	1.85 2 1/8	2.25 2 5/8	2.25 2 5/8	2.25 2 5/8	2.25 2 5/8	2.55 2 7/8	1.55 1 5/8	1.55 1 5/8	1.55 1 5/8	1.60 1 3/4	1.90 2 1/8	1.90 2 1/8	1.90 2 1/8	1.90 2 1/8	1.90 2 1/8	
C	m yds	1.35 1 5/8	1.40 1 5/8	1.40 1 5/8	1.40 1 5/8	1.45 1 3/4	1.45 1 3/4	1.45 1 3/4	1.45 1 3/4	1.10 1 1/4	1.10 1 1/4	1.10 1 1/4	1.10 1 1/4	1.45 1 3/4	1.45 1 3/4	1.45 1 3/4	1.45 1 3/4	1.45 1 3/4	
C Futter • Doublure Lining	m yds	0.65 7/8	0.65 7/8	1.00 1 1/8	1.00 1 1/8	1.00 1 1/8	1.00 1 1/8	1.05 1 1/4	1.05 1 1/4	0.65 7/8	0.65 7/8	0.70 7/8	0.70 7/8	0.70 7/8	0.70 7/8	0.70 7/8	0.70 7/8	0.75 7/8	
D	m yds	2.40 2 5/8	2.40 2 5/8	2.80 3 1/8	2.80 3 1/8	2.85 3 1/4	2.85 3 1/4	2.90 3 1/4	2.90 3 1/4	3.20 3 1/2	2.25 2 5/8	2.25 2 5/8	2.25 2 5/8	2.25 2 5/8	2.35 2 5/8	2.35 2 5/8	2.40 2 5/8	2.70 3	2.70 3

8186
 ★