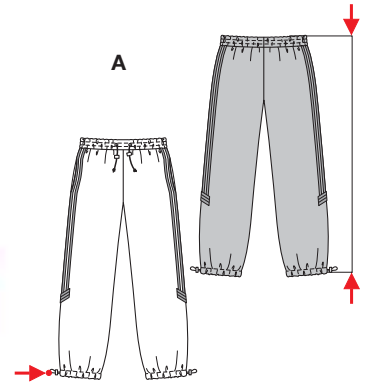


Größen • Tailles • Sizes

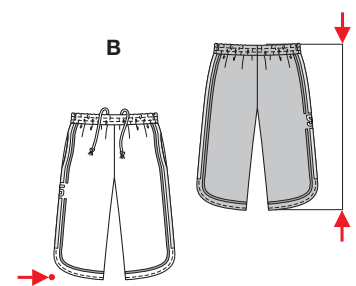
Eur. : **44 - 60**
US : **34 - 50**



A

103 - 115 cm
40³/₄" to 45¹/₄"

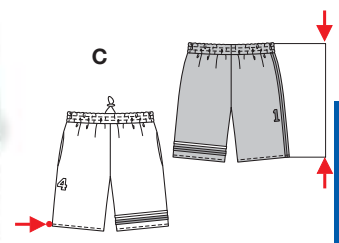
53 - 61 cm
21" to 24"



B

71 - 80 cm
28" to 31¹/₂"

54 - 67 cm
21¹/₄" to 26¹/₂"



C

48 - 57 cm
19" to 22¹/₂"

56 - 73 cm
22¹/₄" to 28³/₄"

HOSE • PANTALON • PANTS • PANTALON

Größen Tailles • Sizes	Eur. US	114 cm / 45 ins										140 cm / 55 ins									
		44	46	48	50	52	54	56	58	60	44	46	48	50	52	54	56	58	60		
A	m	2.20	2.20	2.25	2.25	2.25	2.70	2.70	2.75	2.75	1.60	1.60	1.75	2.15	2.15	2.20	2.30	2.40	2.40		
	yds	2 ¹ / ₂	2 ¹ / ₂	2 ⁵ / ₈	2 ⁵ / ₈	2 ⁵ / ₈	3	3	3 ¹ / ₈	3 ¹ / ₈	1 ³ / ₄	1 ³ / ₄	2	2 ¹ / ₂	2 ¹ / ₂	2 ¹ / ₂	2 ⁵ / ₈	2 ⁵ / ₈	2 ⁵ / ₈		
B	m	1.70	1.70	1.70	1.75	1.75	2.00	2.00	2.00	2.00	1.25	1.25	1.35	1.45	1.45	1.50	1.75	1.80	1.80		
	yds	1 ⁷ / ₈	1 ⁷ / ₈	1 ⁷ / ₈	2	2	2 ¹ / ₄	2 ¹ / ₄	2 ¹ / ₄	2 ¹ / ₄	1 ¹ / ₂	1 ¹ / ₂	1 ⁵ / ₈	1 ³ / ₄	1 ³ / ₄	1 ³ / ₄	2	2	2		
C	m	1.25	1.25	1.25	1.30	1.30	1.70	1.70	1.70	1.70	1.05	1.05	1.05	1.05	1.05	1.05	1.35	1.35	1.35		
	yds	1 ¹ / ₂	1 ¹ / ₂	1 ¹ / ₂	1 ³ / ₈	1 ³ / ₈	1 ⁷ / ₈	1 ⁷ / ₈	1 ⁷ / ₈	1 ⁷ / ₈	1 ¹ / ₄	1 ¹ / ₄	1 ¹ / ₄	1 ¹ / ₄	1 ¹ / ₄	1 ¹ / ₄	1 ⁵ / ₈	1 ⁵ / ₈	1 ⁵ / ₈		



sehr leicht, très facile, very easy, muy fácil.

ABC: normal weit, semi-ajusté, semi-fitted.

Stoffempfehlung: Sweatshirtstoffe, Popeline, Mikrofaser.

Tissus conseillés: tissu molletonné, popeline, microfibre synthétiques.

Recommended fabrics: sweatshirting, poplin, microfiber synthetics.

→ mit Richtung • avec sens • with nap

★ ohne Richtung • sans sens • without nap

8187