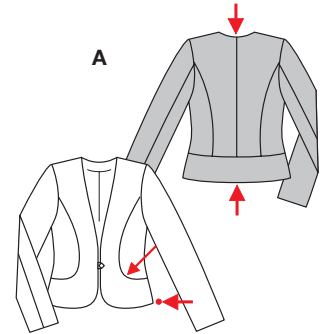
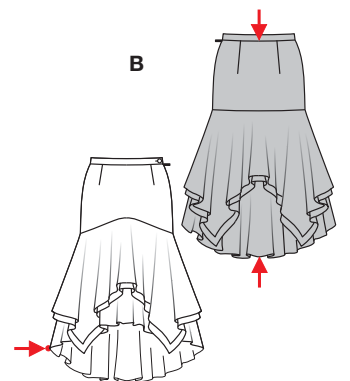


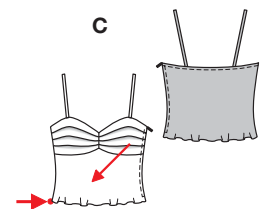
**PLUS** Größen • Tailles • Sizes  
Eur.: **36 - 48**  
US: **10 - 22**



↓  
**A** 55 - 58 cm  
21<sup>3</sup>/<sub>4</sub>" to 23"  
↑  
**A** 96 - 122 cm  
37<sup>3</sup>/<sub>4</sub>" to 48"  
↻



↓  
**B** 84 cm  
33"  
↑  
**B** 395 - 415 cm  
4<sup>3</sup>/<sub>8</sub> yds to 4<sup>5</sup>/<sub>8</sub> yds  
↻



↓  
**C** 88 - 114 cm  
34<sup>3</sup>/<sub>4</sub>" to 45"  
↻

**KOMBINATION**



mittel, moins facile, average, dificultad media.

**AB:** körpernah, ajusté, fitted; **Schulter • Epaule** **Shoulder:** normal, normale, average width; **C:** eng anliegend, très ajusté, close fitting.

**Stoffempfehlung:** A: Rips, Satin; BC: Georgette.

**Tissus conseillés:** A: reps, satin; BC: georgette.

**Recommended fabrics:** A: rep fabric, satin; BC: georgette.

**COORDONNEES • COORDINATES • COORDINADOS**

Größen Tailles • Sizes	Eur. US	140 cm / 55 ins								150 cm / 59 ins							
		36	38	40	42	44	46	48	36	38	40	42	44	46	48		
<b>A</b>	m yds	1.45 1 <sup>3</sup> / <sub>4</sub>	1.45 1 <sup>3</sup> / <sub>4</sub>	1.45 1 <sup>3</sup> / <sub>4</sub>	1.50 1 <sup>3</sup> / <sub>4</sub>	1.50 1 <sup>3</sup> / <sub>4</sub>	1.70 1 <sup>7</sup> / <sub>8</sub>	1.70 1 <sup>7</sup> / <sub>8</sub>	1.25 1 <sup>1</sup> / <sub>2</sub>	1.25 1 <sup>1</sup> / <sub>2</sub>	1.45 1 <sup>3</sup> / <sub>4</sub>	1.45 1 <sup>3</sup> / <sub>4</sub>	1.45 1 <sup>3</sup> / <sub>4</sub>	1.50 1 <sup>3</sup> / <sub>4</sub>	1.50 1 <sup>3</sup> / <sub>4</sub>		
<b>A Futter • Doublure Lining</b>	m yds	1.20 1 <sup>1</sup> / <sub>2</sub>	1.20 1 <sup>1</sup> / <sub>2</sub>	1.20 1 <sup>1</sup> / <sub>2</sub>	1.25 1 <sup>1</sup> / <sub>2</sub>	1.25 1 <sup>1</sup> / <sub>2</sub>	1.25 1 <sup>1</sup> / <sub>2</sub>	1.10 1 <sup>1</sup> / <sub>4</sub>	1.10 1 <sup>1</sup> / <sub>4</sub>	1.10 1 <sup>1</sup> / <sub>4</sub>	1.15 1 <sup>1</sup> / <sub>4</sub>	1.15 1 <sup>1</sup> / <sub>4</sub>	1.15 1 <sup>1</sup> / <sub>4</sub>	1.15 1 <sup>1</sup> / <sub>4</sub>	1.15 1 <sup>1</sup> / <sub>4</sub>		
<b>B</b>	m yds	3.60 4	3.60 4	3.65 4 <sup>1</sup> / <sub>8</sub>	3.70 4 <sup>1</sup> / <sub>8</sub>	3.70 4 <sup>1</sup> / <sub>8</sub>	3.70 4 <sup>1</sup> / <sub>8</sub>	3.80 4 <sup>1</sup> / <sub>4</sub>	3.60 4	3.60 4	3.65 4 <sup>1</sup> / <sub>8</sub>	3.70 4 <sup>1</sup> / <sub>8</sub>	3.70 4 <sup>1</sup> / <sub>8</sub>	3.70 4 <sup>1</sup> / <sub>8</sub>	3.80 4 <sup>1</sup> / <sub>4</sub>		
<b>B Futter • Doublure Lining</b>	m yds	0.40 1/2	0.40 1/2	0.40 1/2	0.40 1/2	0.40 1/2	0.40 1/2	0.40 1/2	0.40 1/2	0.40 1/2	0.40 1/2	0.40 1/2	0.40 1/2	0.40 1/2	0.40 1/2		
<b>C</b>	m yds	0.85 1	0.85 1	0.85 1	0.95 1 <sup>1</sup> / <sub>8</sub>	0.95 1 <sup>1</sup> / <sub>8</sub>	1.00 1 <sup>1</sup> / <sub>8</sub>	1.00 1 <sup>1</sup> / <sub>8</sub>	0.75 7/8	0.75 7/8	0.75 7/8	0.80 7/8	0.80 7/8	0.85 1	0.85 1		

→ mit Richtung • avec sens • with nap

★ ohne Richtung • sans sens • without nap

**8189**