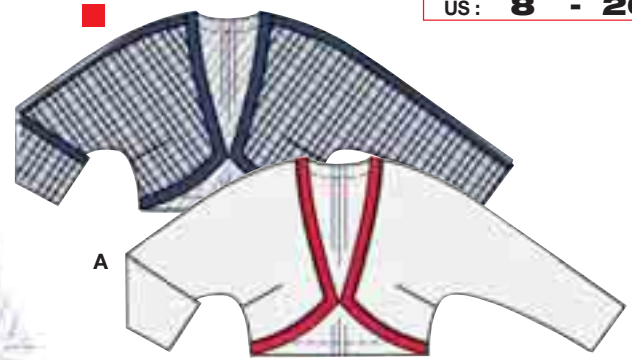


Größen • Tailles • Sizes  
 Eur.: **34 - 46**  
 US: **8 - 20**



**KLEID + JACKE**  
**ROBE + VESTE • DRESS + JACKET • VESTIDO + CHAQUETA**

Größen Tailles • Sizes	Eur. US	114 cm / 45 ins								140 cm / 55 ins							
		34 8	36 10	38 12	40 14	42 16	44 18	46 20	34 8	36 10	38 12	40 14	42 16	44 18	46 20		
A längs gestreifter Stoff • tissu à rayures verticales • vertically striped fabric	m yds	1.05 1 1/4	1.05 1 1/4	1.05 1 1/4	1.15 1 3/8	1.20 1 3/8	1.35 1 5/8	1.35 1 5/8	0.80 7/8	0.80 7/8	0.80 7/8	0.85 1	0.85 1	1.10 1 1/4	1.10 1 1/4		
B	m yds	0.90 1	0.90 1	0.90 1	0.90 1	0.95 1 1/8	1.00 1 1/8	1.00 1 1/8	0.55 3/4	0.55 3/4	0.55 3/4	0.60 3/4	0.70 7/8	0.75 7/8	0.75 7/8		
AB Garniturstoff • Tissu garniture Contrasting fabric	m yds	0.50 5/8	0.50 5/8	0.50 5/8	0.50 5/8	0.55 3/4	0.55 3/4	0.55 3/4	0.50 5/8	0.50 5/8	0.50 5/8	0.50 5/8	0.55 3/4	0.55 3/4	0.55 3/4		
C	m yds	1.35 1 5/8	1.35 1 5/8	1.35 1 5/8	1.65 1 7/8	1.70 1 7/8	2.00 2 1/4	2.00 2 1/4	1.35 1 5/8	1.35 1 5/8	1.35 1 5/8	1.40 1 5/8	1.40 1 5/8	1.40 1 5/8	1.40 1 5/8		

→ mit Richtung • avec sens • with nap      ★ ohne Richtung • sans sens • without nap

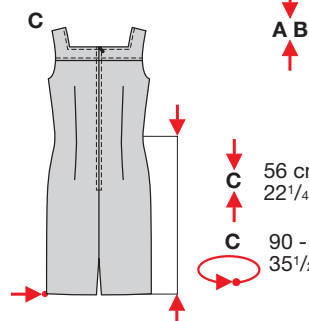
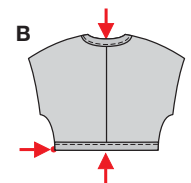
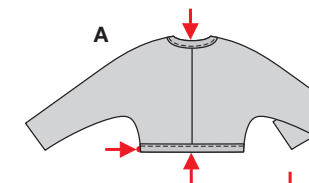
**ACHTUNG!** Bei längs gestreiftem Stoff erhöhter Stoffverbrauch • **ATTENTION!** Pour les tissus à rayures verticales compter un métrage supérieur • **IMPORTANT!** extra fabric required to vertically striped fabrics

ABC: körpernah, ajusté, fitted.

**Stoffempfehlung:** Gabardine, Leinenmischgewebe, Kreppstoffe.

**Tissus conseillés:** gabardine, lin mélangé, crêpe.

**Recommended fabrics:** gabardine, linen blends, crepe fabric.



AB 42 - 45 cm  
16 1/2" to 17 3/4"

C 56 cm  
22 1/4"

C 90 - 114 cm  
35 1/2" to 45"



leicht, facile, easy, fácil.