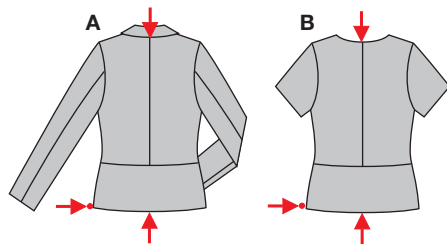


PLUS Größen • Tailles • Sizes
 Eur.: **36 - 48**
 US: **10 - 22**



8211



mittel, moins facile, average, dificultad media.

A 59 - 62 cm
23 1/4" to 24 1/2"

A B 99 - 125 cm
39" to 49 1/4"

JACKE • VESTE • JACKET • CHAQUETA

Größen Tailles • Sizes	114 cm / 45 ins								140 cm / 55 ins							
	Eur. US	36 10	38 12	40 14	42 16	44 18	46 20	48 22	36 10	38 12	40 14	42 16	44 18	46 20	48 22	
A	m yds	2.10 2 3/8	2.10 2 3/8	2.10 2 3/8	2.15 2 1/2	2.15 2 1/2	2.25 2 5/8	2.25 2 5/8	1.70 1 7/8	1.70 1 7/8	1.70 1 7/8	1.70 1 7/8	2.00 2 1/4	2.05 2 3/8	2.05 2 3/8	
A Futter • Doublure Lining	m yds	1.45 1 3/4	1.45 1 3/4	1.45 1 3/4	1.50 1 3/4	1.50 1 3/4	1.55 1 3/4	1.55 1 3/4	1.25 1 1/2	1.25 1 1/2	1.25 1 1/2	1.25 1 1/2	1.30 1 1/2	1.30 1 1/2	1.30 1 1/2	
B	m yds	1.60 1 3/4	1.60 1 3/4	1.60 1 3/4	1.60 1 3/4	1.60 1 3/4	1.70 1 7/8	1.70 1 7/8	1.25 1 1/2	1.25 1 1/2	1.55 1 3/4	1.55 1 3/4	1.55 1 3/4	1.55 1 3/4	1.55 1 3/4	
B Futter • Doublure Lining	m yds	0.80 7/8	0.80 7/8	0.80 7/8	0.80 7/8	0.85 1	0.90 1	0.90 1	0.80 7/8	0.80 7/8	0.80 7/8	0.80 7/8	0.80 7/8	0.80 7/8	0.80 7/8	

→ mit Richtung • avec sens • with nap

AB: normal weit, semi-ajusté, semi-fitted;
Schulter • Epaule • Shoulder:
 normal, normale, average width.

Stoffempfehlung: Leinenmischgewebe, Rips, Bouclé, leichte Wollstoffe.
Tissus conseillés: lin mélangé, reps, bouclé, tissus en laine légers.
Recommended fabrics: linen blends, rep fabric, bouclé, lightwt. wools.