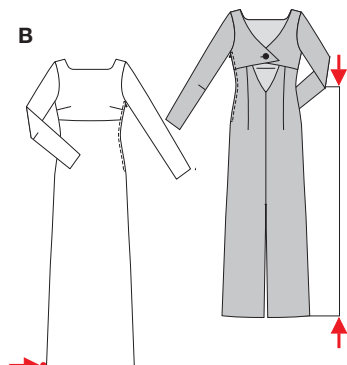
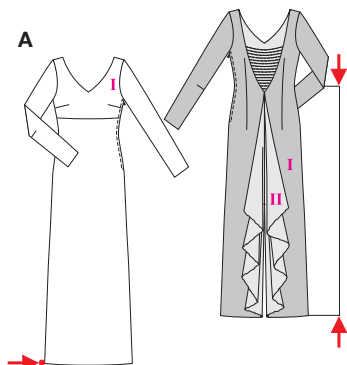
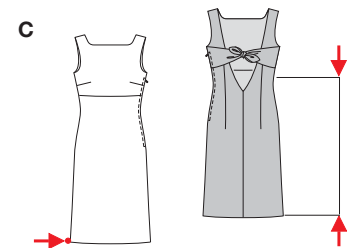


**PLUS** Größen • Tailles • Sizes  
 Eur.: **36 - 48**  
 US: **10 - 22**



AB 110 cm  
43 1/2"

AB 109 - 135 cm  
43" to 53 1/4"



C 60 cm  
23 3/4"



D 65 cm  
25 3/4"

CD 101 - 128 cm  
39 3/4" to 50 1/2"



## KLEID • ROBE DRESS • VESTIDO



mittel, moins facile, average, dificultad media.

**ABCD:** eng anliegend, très ajusté, close fitting.

### Stoffempfehlung:

Kreppstoffe, Satin, Effekstoffe; A II: Chiffon.

### Tissus conseillés:

crêpe, satin, tissus à effets; A II: chiffon.

### Recommended fabrics:

crepe fabric, satin, special effect fabrics; A II: chiffon.

| Größen<br>Tailles • Sizes    | Eur.<br>US | 114 cm / 45 ins |          |          |          |          |          |          |          | 140 cm / 55 ins |          |          |          |          |          |  |  |
|------------------------------|------------|-----------------|----------|----------|----------|----------|----------|----------|----------|-----------------|----------|----------|----------|----------|----------|--|--|
|                              |            | 36<br>10        | 38<br>12 | 40<br>14 | 42<br>16 | 44<br>18 | 46<br>20 | 48<br>22 | 36<br>10 | 38<br>12        | 40<br>14 | 42<br>16 | 44<br>18 | 46<br>20 | 48<br>22 |  |  |
| A I                          | m          | 2.85            | 2.85     | 2.90     | 2.90     | 2.90     | 2.90     | 2.95     | 2.40     | 2.40            | 2.40     | 2.40     | 2.40     | 2.40     | 2.40     |  |  |
|                              | yds        | 3 1/4           | 3 1/4    | 3 1/4    | 3 1/4    | 3 1/4    | 3 1/4    | 3 3/8    | 2 3/8    | 2 3/8           | 2 3/8    | 2 3/8    | 2 3/8    | 2 3/8    | 2 3/8    |  |  |
| A II                         | m          | 1.50            | 1.50     | 1.50     | 1.50     | 1.50     | 1.50     | 1.50     | 1.15     | 1.15            | 1.15     | 1.15     | 1.15     | 1.15     |          |  |  |
|                              | yds        | 1 3/4           | 1 3/4    | 1 3/4    | 1 3/4    | 1 3/4    | 1 3/4    | 1 3/4    | 1 1/8    | 1 1/8           | 1 1/8    | 1 1/8    | 1 1/8    | 1 1/8    |          |  |  |
| A Futter • Doublure • Lining | m          | 1.70            | 1.70     | 1.95     | 2.50     | 2.85     | 2.90     | 2.90     | 1.70     | 1.75            | 1.75     | 1.75     | 1.75     | 1.75     |          |  |  |
|                              | yds        | 1 7/8           | 1 7/8    | 2 1/4    | 2 3/4    | 3 1/4    | 3 1/4    | 3 1/4    | 1 7/8    | 2               | 2        | 2        | 2        | 2        |          |  |  |
| B                            | m          | 2.85            | 2.85     | 2.90     | 2.90     | 3.25     | 3.25     | 3.25     | 2.35     | 2.35            | 2.35     | 2.40     | 2.40     | 2.55     |          |  |  |
|                              | yds        | 3 1/4           | 3 1/4    | 3 1/4    | 3 1/4    | 3 3/8    | 3 3/8    | 3 3/8    | 2 3/8    | 2 3/8           | 2 3/8    | 2 3/8    | 2 3/8    | 2 7/8    |          |  |  |
| B Futter • Doublure • Lining | m          | 1.95            | 1.95     | 2.05     | 2.50     | 2.85     | 2.90     | 2.90     | 1.80     | 1.80            | 1.85     | 1.85     | 1.85     | 1.90     |          |  |  |
|                              | yds        | 2 1/4           | 2 1/4    | 2 3/8    | 2 3/4    | 3 1/4    | 3 1/4    | 3 1/4    | 2        | 2               | 2 1/8    | 2 1/8    | 2 1/8    | 2 1/8    |          |  |  |
| C                            | m          | 1.35            | 1.35     | 1.45     | 1.65     | 1.90     | 1.90     | 1.90     | 1.30     | 1.30            | 1.35     | 1.35     | 1.35     | 1.40     |          |  |  |
|                              | yds        | 1 5/8           | 1 5/8    | 1 3/4    | 1 7/8    | 2 1/8    | 2 1/8    | 2 1/8    | 1 1/2    | 1 1/2           | 1 5/8    | 1 5/8    | 1 5/8    | 1 5/8    |          |  |  |
| C Futter • Doublure • Lining | m          | 1.45            | 1.45     | 1.45     | 1.45     | 1.75     | 2.00     | 2.05     | 1.30     | 1.30            | 1.30     | 1.30     | 1.30     | 1.35     |          |  |  |
|                              | yds        | 1 3/4           | 1 3/4    | 1 3/4    | 1 3/4    | 2        | 2 1/4    | 2 3/8    | 1 1/2    | 1 1/2           | 1 1/2    | 1 1/2    | 1 1/2    | 1 3/8    |          |  |  |
| D                            | m          | 1.70            | 1.70     | 1.85     | 1.85     | 1.85     | 1.95     | 2.05     | 1.65     | 1.65            | 1.70     | 1.70     | 1.70     | 1.75     |          |  |  |
|                              | yds        | 1 7/8           | 1 7/8    | 2 1/8    | 2 1/8    | 2 1/8    | 2 1/4    | 2 3/8    | 1 7/8    | 1 7/8           | 1 7/8    | 1 7/8    | 1 7/8    | 2        |          |  |  |
| D Futter • Doublure • Lining | m          | 1.20            | 1.20     | 1.20     | 1.70     | 1.70     | 1.80     | 1.90     | 1.20     | 1.20            | 1.20     | 1.20     | 1.25     | 1.25     |          |  |  |
|                              | yds        | 1 3/8           | 1 3/8    | 1 3/8    | 1 7/8    | 1 7/8    | 2        | 2 1/8    | 1 3/8    | 1 3/8           | 1 3/8    | 1 3/8    | 1 1/2    | 1 1/2    |          |  |  |

→ mit Richtung  
 avec sens • with nap