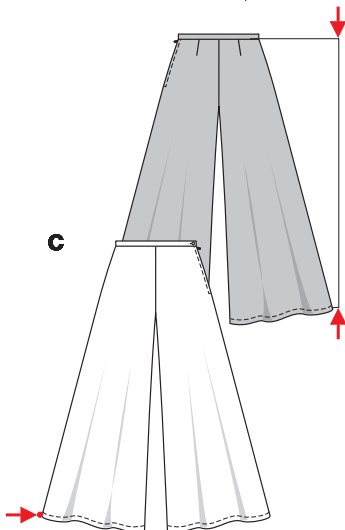
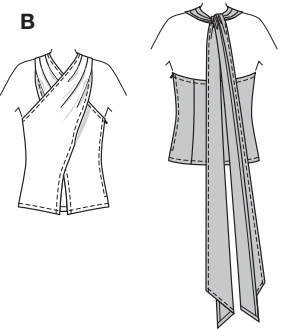
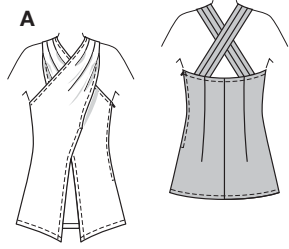
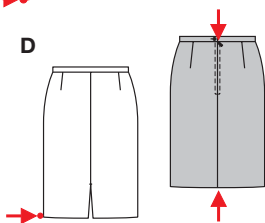


Größen • Tailles • Sizes
 Eur.: **34 - 46**
 US: **8 - 20**



↓ C 110 - 113 cm
43 1/2" to 44 1/2"
 C 114 - 132 cm
45" to 52"



↓ D 54 cm
21 1/4"
 D 90 - 114 cm
35 1/2" to 45"



KOMBINATION



mittel, moins facile, average, dificultad media.

AB: körpernah, ajusté, fitted;
 CD: normal weit, semi-ajusté, semi-fitted.

Stoffempfehlung:
 Chiffon, Satin, Georgette.
Tissus conseillés:
 chiffon, satin, georgette.
Recommended fabrics:
 chiffon, satin, georgette.

→ mit Richtung
 avec sens • with nap

★ ohne Richtung
 sans sens • without nap

COORDONNEES • COODINATES • COORDINADOS

Größen Tailles • Sizes	Eur. US	114 cm / 45 ins								140 cm / 55 ins							
		34 8	36 10	38 12	40 14	42 16	44 18	46 20	34 8	36 10	38 12	40 14	42 16	44 18	46 20		
A	m yds	1.35 1 5/8	1.35 1 5/8	1.35 1 5/8	1.35 1 5/8	1.40 1 5/8	1.45 1 3/4	1.55 1 3/4	1.35 1 5/8	1.35 1 5/8	1.35 1 5/8	1.35 1 5/8	1.40 1 5/8	1.40 1 5/8	1.40 1 5/8		
B	m yds	2.10 2 3/8	2.10 2 3/8	2.10 2 3/8	2.10 2 3/8	2.10 2 3/8	2.15 2 1/2	2.15 2 1/2	2.10 2 3/8	2.10 2 3/8	2.10 2 3/8	2.10 2 3/8	2.10 2 3/8	2.15 2 1/2	2.15 2 1/2		
C	m yds	2.35 2 5/8	2.35 2 5/8	2.35 2 5/8	2.60 2 7/8	2.95 3 3/8	3.35 3 3/4	3.70 4 1/8	2.30 2 5/8	2.30 2 5/8	2.30 2 5/8	2.35 2 5/8	2.35 2 5/8	2.40 2 5/8	2.40 2 5/8		
D	m yds	0.70 7/8	0.70 7/8	0.70 7/8	1.00 1 1/8	1.15 1 3/8	1.25 1 1/2	1.25 1 1/2	0.70 7/8	0.70 7/8	0.70 7/8	0.70 7/8	0.70 7/8	0.70 7/8	0.70 7/8		
D Futter • Doublure • Lining	m yds	0.60 3/4	0.60 3/4	0.60 3/4	0.90 1	1.00 1 1/8	1.20 1 3/8	1.20 1 3/8	0.60 3/4	0.60 3/4	0.60 3/4	0.60 3/4	0.60 3/4	0.60 3/4	0.60 3/4		

8257
★