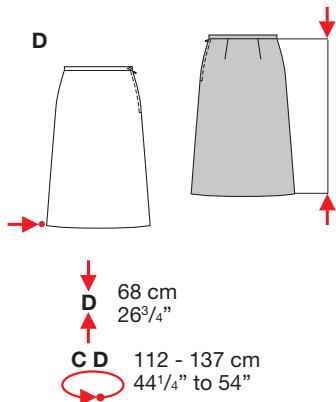
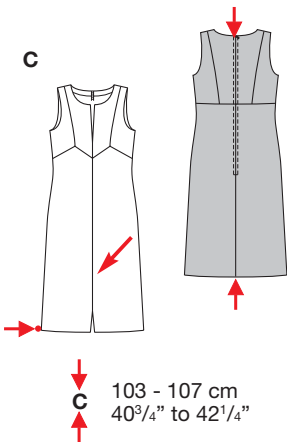
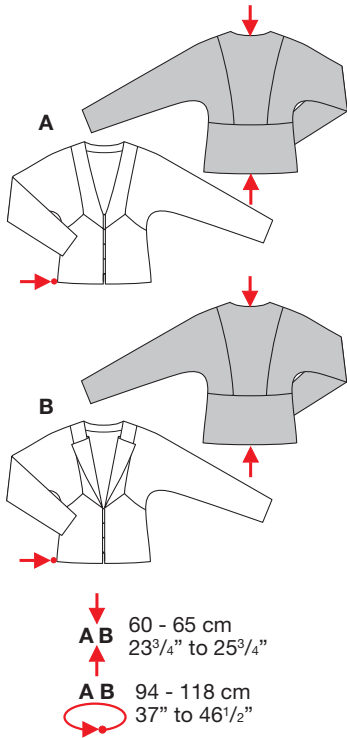


Größen • Tailles • Sizes
Eur.: **34 - 46**
US: **8 - 20**



KLEID + JACKE



mittel, moins facile, average, dificultad media.

ABD: normal weit, semi-ajusté, semi-fitted;
C: körpernah, ajusté, fitted

Stoffempfehlung:
Leinenmischgewebe, leichte Wollstoffe, Crashstoffe.

Tissus conseillés: lin mélange, tissus en laine légers, tissus froissés.

Recommended fabrics:
linen blends, lightwt. wools, crushed fabrics

→ mit Richtung
avec sens • with nap

ROBE + VESTE • DRESS + JACKET • VESTIDO + CHAQUETA

Größen Tailles • Sizes	Eur. US	114 cm / 45 ins								140 cm / 55 ins							
		34 8	36 10	38 12	40 14	42 16	44 18	46 20	34 8	36 10	38 12	40 14	42 16	44 18	46 20		
A	m yds	2.05 2 ^{1/8}	2.05 2 ^{3/8}	2.05 2 ^{3/8}	2.10 2 ^{3/8}	2.10 2 ^{3/8}	2.10 2 ^{3/8}	2.10 2 ^{3/8}	1.45 1 ^{3/4}	1.45 1 ^{3/4}	1.45 1 ^{3/4}	1.80 2	1.80 2	1.80 2	1.80 2		
B	m yds	2.25 2 ^{5/8}	2.25 2 ^{5/8}	2.25 2 ^{5/8}	2.30 2 ^{5/8}	2.30 2 ^{5/8}	2.30 2 ^{5/8}	2.30 2 ^{5/8}	1.60 1 ^{3/4}	1.60 1 ^{3/4}	1.65 1 ^{7/8}	1.95 2 ^{1/4}	1.95 2 ^{1/4}	1.95 2 ^{1/4}	1.95 2 ^{1/4}		
AB Futter • Doublure • Lining	m yds	1.75 2	1.75 2	1.80 2	1.80 2	1.80 2	1.80 2	1.80 2	1.20 1 ^{3/8}	1.20 1 ^{3/8}	1.20 1 ^{3/8}	1.25 1 ^{1/2}	1.25 1 ^{1/2}	1.25 1 ^{1/2}	1.60 1 ^{3/4}		
C	m yds	1.90 2 ^{1/8}	1.90 2 ^{1/8}	2.20 2 ^{1/2}	2.25 2 ^{5/8}	2.25 2 ^{5/8}	2.30 2 ^{5/8}	2.30 2 ^{5/8}	1.80 2	1.80 2	1.85 2 ^{1/8}	1.90 2 ^{1/8}	1.90 2 ^{1/8}	1.95 2 ^{1/4}	1.95 2 ^{1/4}		
C Futter • Doublure • Lining	m yds	1.65 1 ^{7/8}	1.70 1 ^{7/8}	1.75 2	2.10 2 ^{3/8}	2.10 2 ^{3/8}	2.15 2 ^{1/2}	2.15 2 ^{1/2}	1.30 1 ^{1/2}	1.30 1 ^{1/2}	1.55 1 ^{3/4}	1.65 1 ^{7/8}	1.65 1 ^{7/8}	1.70 1 ^{7/8}	1.70 1 ^{7/8}		
D	m yds	1.50 1 ^{3/4}	1.50 1 ^{3/4}	1.50 1 ^{3/4}	1.50 1 ^{3/4}	1.50 1 ^{3/4}	1.50 1 ^{3/4}	1.50 1 ^{3/4}	0.85 1	0.85 1	0.85 1	0.85 1	0.85 1	1.50 1 ^{3/4}	1.50 1 ^{3/4}		
D Futter • Doublure • Lining	m yds	0.85 1	1.05 1 ^{1/4}	1.25 1 ^{1/2}	1.45 1 ^{3/4}	1.45 1 ^{3/4}	1.45 1 ^{3/4}	1.45 1 ^{3/4}	0.75 7/8	0.75 7/8	0.75 7/8	0.75 7/8	0.75 7/8	0.75 7/8	0.75 7/8		

8261