

PLUS Größen • Tailles • Sizes
Eur.: **36 - 54**
US: **10 - 28**

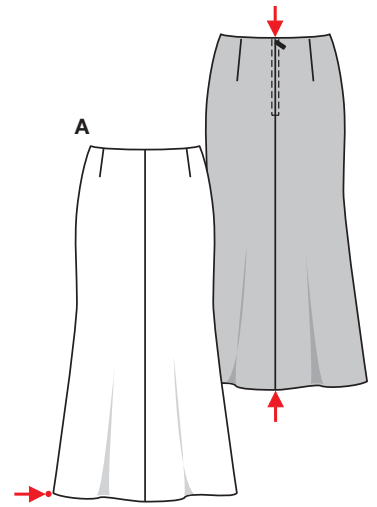


8287

B

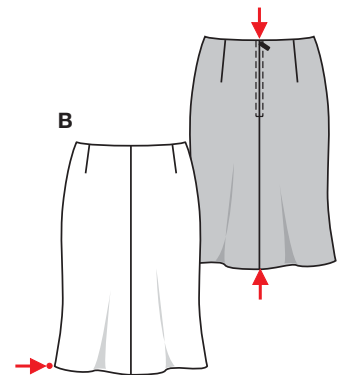


A



A 92 cm
36 1/4"

A 137 - 181 cm
54" to 71 1/4"



B 60 cm
23 3/4"

B 117 - 161 cm
16" to 63 1/2"

start 2

geringe Kenntnisse
quelques connaissances
little sewing experience
pocos conocimientos

AB: körpernah, ajusté, fit-
ted.

Stoffempfehlung:
Tweed, Kreppstoffe, Flanell,
Lederimitat.

Tissus conseillés: tweed,
crêpe, flanelle, imitation cuir.

Recommended fabrics:
tweed, crepe fabric, flannel,
leather imitation.

ROCK • JUPE • SKIRT • FALDA

Größen Tailles • Sizes	Eur. US	114 cm / 45 ins							140 cm / 55 ins						
		36 10	38 12	40 14	42 16	44 18	46 20	48+50+52+54 22+24+26+28	36 10	38 12	40 14	42 16	44 18	46 20	48+50+52+54 22+24+26+28
A	m yds	2.00 2 1/4	2.00 2 1/4	2.20 2 1/2	2.20 2 1/2	2.20 2 1/2	2.20 2 1/2	2.20 2 1/2	1.25 1 1/2	1.30 1 1/2	1.40 1 5/8	2.15 2 1/2	2.15 2 1/2	2.15 2 1/2	2.15 2 1/2
A Futter • Doublure Lining	m yds	2.00 2 1/4	2.00 2 1/4	2.00 2 1/4	2.00 2 1/4	2.00 2 1/4	2.00 2 1/4	2.00 2 1/4	1.00 1 1/8	1.20 1 3/8	1.30 1 1/2	2.00 2 1/4	2.00 2 1/4	2.00 2 1/4	2.00 2 1/4
B	m yds	1.55 1 3/4	1.55 1 3/4	1.55 1 3/4	1.55 1 3/4	1.55 1 3/4	1.55 1 3/4	1.55 1 3/4	0.80 7/8	0.80 7/8	0.80 7/8	0.80 7/8	0.80 7/8	0.90 1	1.50 1 3/4

→ mit Richtung • avec sens • with nap
★ ohne Richtung • sans sens • without nap

8280