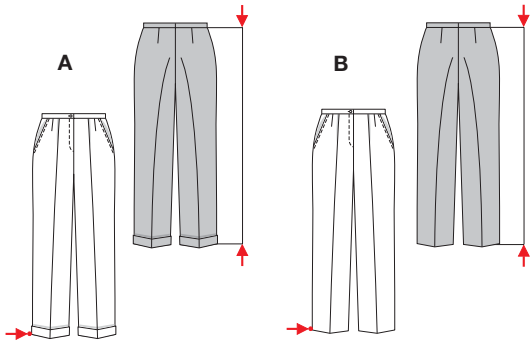


**burda®**

8291

8290



$\downarrow$  AB 107 cm  
 $42\frac{1}{4}$ "  
 $\uparrow$   
 A B 45 - 52 cm  
 $17\frac{3}{4}$ " to  $20\frac{1}{2}$ "

Weitere Angaben siehe Schnitttüte  
 Autres indications voir pochette du patron  
 See pattern envelope for further details  
 Más indicaciones, en la bolsa con los patrones.

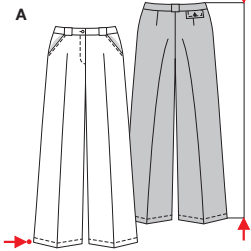
**8283**  
★

**PLUS**

Größen • Tailles • Sizes  
 Eur. : **36 - 50**  
 US: **10 - 24**

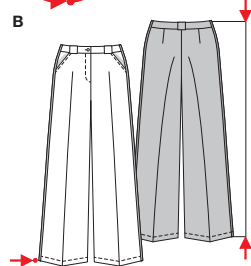


**burda®**



$\downarrow$  A B 103 - 106 cm  
 $40\frac{3}{4}$ " to  $41\frac{3}{4}$ "  
 $\uparrow$

A B 66 - 74 cm  
 $26$ " to  $29\frac{1}{4}$ "  
 $\circlearrowleft$



Weitere Angaben siehe Schnitttüte  
 Autres indications voir pochette du patron  
 See pattern envelope for further details  
 Más indicaciones, en la bolsa con los patrones.

**8551**  
★

Größen • Tailles • Sizes  
 Eur. : **34 - 44**  
 US: **8 - 18**

