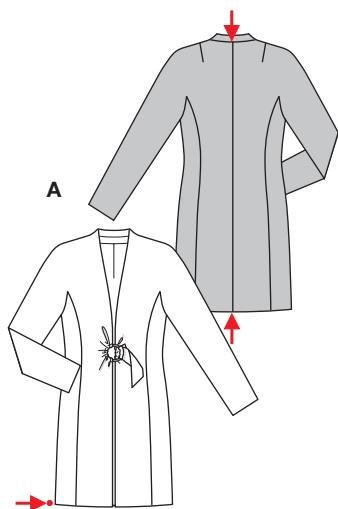
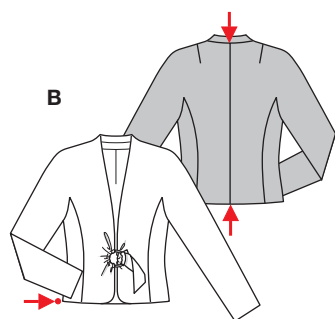


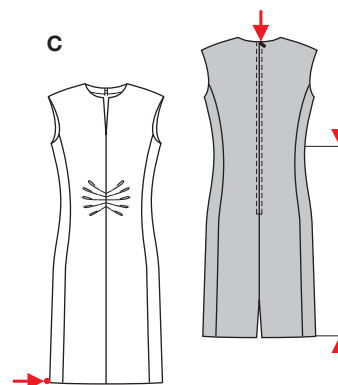
PLUS Größen • Tailles • Sizes
 Eur.: **36 - 48**
 US: **10 - 22**



A 92 - 95 cm
 36 1/4" to 37 1/2"
A 104 - 130 cm
 41" to 51 1/4"



B 54 - 57 cm
 21 1/4" to 22 1/2"
B 99 - 125 cm
 39" to 49 1/4"



C 60 cm
 23 3/4"
C 96 - 122 cm
 37 3/4" to 48"



3114

KLEID + JACKE



mittel, moins facile, average, dificultad media.

ABC: normal weit, semi-ajusté, semi-fitted.

Schulter • Epaulé
Shoulder: normal, normale, average width.

Stoffempfehlung: Leichte Wollstoffe, Krepptoffe, Leinenmischgewebe.

Tissus conseillés: tissus en laine légers, crêpe, lin mélange.

Recommended fabrics: lightwt. wools, crepe fabric, linen blends.

ROBE + VESTE • DRESS + JACKET • VESTIDO + CHAQUETA



Größen Tailles • Sizes	Eur. US	114 cm / 45 ins						140 cm / 55 ins							
		36 10	38 12	40 14	42 16	44 18	46 20	48 22	36 10	38 12	40 14	42 16	44 18	46 20	48 22
A	m yds	3.20 3 1/2	3.20 3 1/2	3.20 3 1/2	3.40 3 3/4	3.40 3 3/4	3.45 3 7/8	3.45 3 7/8	2.45 2 3/4	2.45 2 3/4	2.45 2 3/4	2.70 3	2.70 3	2.75 3 1/8	2.75 3 1/8
A Futter • Doublure Lining	m yds	2.45 2 3/4	2.45 2 3/4	2.45 2 3/4	2.45 2 3/4	2.50 2 5/8	2.50 2 5/8	2.50 2 5/8	1.80 2	1.80 2	1.80 2	1.80 2	2.35 2 5/8	2.40 2 5/8	2.40 2 5/8
B	m yds	2.15 2 1/2	2.15 2 1/2	2.15 2 1/2	2.20 2 1/2	2.40 2 5/8	2.45 2 5/8	2.45 2 5/8	1.70 1 7/8	1.70 1 7/8	1.70 1 7/8	2.00 2 1/4	2.00 2 1/4	2.05 2 3/8	2.05 2 3/8
B Futter • Doublure Lining	m yds	1.70 1 7/8	1.70 1 7/8	1.70 1 7/8	1.70 1 7/8	1.75 2	1.75 2	1.75 2	1.15 1 1/8	1.15 1 1/8	1.15 1 1/8	1.15 1 1/8	1.65 1 7/8	1.70 1 7/8	1.70 1 7/8
C	m yds	2.05 2 3/8	2.05 2 3/8	2.05 2 3/8	2.05 2 3/8	2.10 2 3/8	2.10 2 3/8	2.10 2 3/8	1.50 1 3/4	1.50 1 3/4	1.50 1 3/4	1.50 1 3/4	1.50 1 3/4	2.10 2 3/8	2.10 2 3/8
C Futter • Doublure Lining	m yds	2.00 2 1/4	2.00 2 1/4	2.00 2 1/4	2.00 2 1/4	2.00 2 1/4	2.00 2 1/4	2.00 2 1/4	1.15 1 1/8	1.15 1 1/8	1.15 1 1/8	1.15 1 1/8	1.15 1 1/8	2.00 2 1/4	2.00 2 1/4

→ mit Richtung • avec sens • with nap

