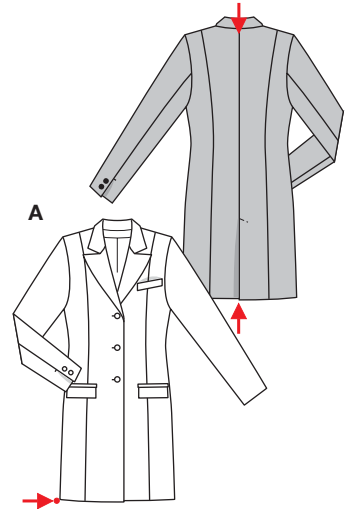
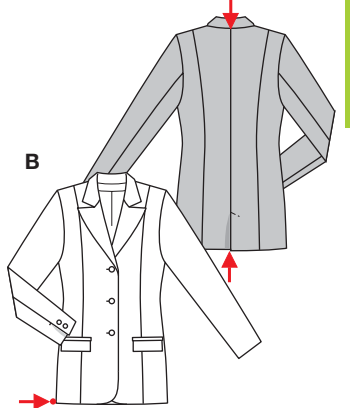


PLUS Größen • Tailles • Sizes
 Eur.: **38 - 50**
 US: **12 - 24**



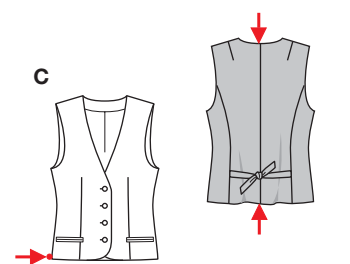
A 92 - 95 cm
 36¹/₄" to 37¹/₂"

A 110 - 138 cm
 43¹/₂" to 54¹/₂"



B 76 - 79 cm
 30" to 31¹/₄"

B 107 - 135 cm
 42¹/₄" to 53¹/₄"



C 55 - 57 cm
 21³/₄" to 22¹/₂"

C 97 - 127 cm
 38¹/₄" to 50"

BLAZER + WESTE • BLAZER + GILET



mittel, moins facile, average, dificultad media.

AB: normal weit, semi-ajusté, semi-fitted; **Schulter Epaule • Shoulder:** normal, normale, average width; **C:** körpernah, ajusté, fitted.

Stoffempfehlung: Flanell, leichter Tweed, Jacquard.
Tissus conseillés: flanelle, tweed légers, jacquard.
Recommended fabrics: flannel, lightwt. tweed, jacquard.

→ mit Richtung avec sens • with nap

SPORTS JACKET + VEST • BLAZER + CHALECO

Größen Tailles • Sizes	Eur. US	114 cm / 45 ins								140 cm / 55 ins							
		38 12	40 14	42 16	44 18	46 20	48 22	50 24	52 24	38 12	40 14	42 16	44 18	46 20	48 22	50 24	
A	m yds	3.00 3 ³ / ₈	3.00 3 ³ / ₈	3.00 3 ³ / ₈	3.50 3 ⁷ / ₈	3.50 3 ⁷ / ₈	3.55 4	3.55 4	2.45 2 ³ / ₄	2.45 2 ³ / ₄	2.45 2 ³ / ₄	2.65 3	2.65 3	2.70 3	2.70 3		
A Futter • Doublure Lining	m yds	2.15 2 ¹ / ₂	2.15 2 ¹ / ₂	2.20 2 ¹ / ₂	2.20 2 ¹ / ₂	2.20 2 ¹ / ₂	2.45 2 ³ / ₄	1.65 1 ⁷ / ₈	1.65 1 ⁷ / ₈	1.75 2	1.75 2	1.75 2	1.95 2 ¹ / ₄	1.95 2 ¹ / ₄			
B	m yds	2.60 2 ⁷ / ₈	2.60 2 ⁷ / ₈	2.60 2 ⁷ / ₈	3.10 3 ¹ / ₂	3.10 3 ¹ / ₂	3.15 3 ¹ / ₂	3.15 3 ¹ / ₂	2.20 2 ¹ / ₂	2.20 2 ¹ / ₂	2.20 2 ¹ / ₂	2.35 2 ⁵ / ₈	2.35 2 ⁵ / ₈	2.40 2 ⁵ / ₈	2.40 2 ⁵ / ₈		
B Futter • Doublure Lining	m yds	1.95 2 ¹ / ₄	1.95 2 ¹ / ₄	2.05 2 ³ / ₈	2.05 2 ³ / ₈	2.05 2 ³ / ₈	2.05 2 ³ / ₈	1.50 1 ⁵ / ₈	1.50 1 ⁵ / ₈	1.65 1 ⁷ / ₈	1.70 1 ⁷ / ₈	1.70 1 ⁷ / ₈	1.70 1 ⁷ / ₈	1.70 1 ⁷ / ₈			
C	m yds	1.25 1 ¹ / ₂	1.25 1 ¹ / ₂	1.25 1 ¹ / ₂	1.40 1 ⁵ / ₈	1.40 1 ⁵ / ₈	1.40 1 ⁵ / ₈	1.40 1 ⁵ / ₈	1.00 1 ¹ / ₈	1.00 1 ¹ / ₈	1.15 1 ³ / ₈	1.15 1 ³ / ₈	1.15 1 ³ / ₈	1.20 1 ³ / ₈	1.20 1 ³ / ₈		
C Futter • Doublure Lining	m yds	0.75 ⁷ / ₈	0.75 ⁷ / ₈	0.95 1 ¹ / ₈	1.00 1 ¹ / ₈	1.00 1 ¹ / ₈	1.00 1 ¹ / ₈	0.65 ⁷ / ₈	0.70 ⁷ / ₈	0.70 ⁷ / ₈	0.70 ⁷ / ₈	0.70 ⁷ / ₈	0.70 ⁷ / ₈	0.70 ⁷ / ₈			

8300
★