

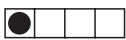


A



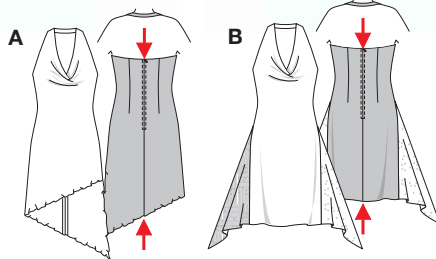
B

**burda**  
**EASY**



sehr leicht, très facile, very easy, muy fácil.

AB: körpernah, ajusté, fitted.



↓  
**A** 82 cm  
32 1/2"

↓  
**B** 77 cm  
30 1/2"

**KLEID • ROBE • DRESS • VESTIDO**

Größen Tailles • Sizes	Eur. US	114 cm / 45 ins						140 cm / 55 ins					
		34 8	36 10	38 12	40 14	42 16	44 18	34 8	36 10	38 12	40 14	42 16	44 18
A	m yds	1.85 2 1/8	1.85 2 1/8	1.85 2 1/8	1.85 2 1/8	1.85 2 1/8	1.85 2 1/8	1.20 →	1.20 →	1.20 →	1.20 →	1.20 →	1.20 1 3/8
B	m yds	1.30 ★	1.30 ★	1.30 ★	1.95 ★	1.95 2 1/4	1.95 ★	1.30 →	1.30 →	1.30 →	1.30 →	1.30 →	1.30 1 1/2
B Garnurstoff Tissu garniture Contrasting fabric	m yds	0.75 →	0.75 →	0.75 →	0.75 →	0.75 →	0.75 →	0.75 →	0.75 →	0.75 →	0.75 →	0.75 →	0.75 →

→ mit Richtung • avec sens • with nap ★ ohne Richtung • sans sens • without nap

**Stoffempfehlung:** Viskose, Jersey; Garnurstoff B: Spitzenstoff.

**Tissus conseillés:** viscose, jersey; Tissu garniture B: tissu dentelle.

**Recommended fabrics:** viscose rayon, jersey; Contrasting fabric B: lace fabric.

**8309**