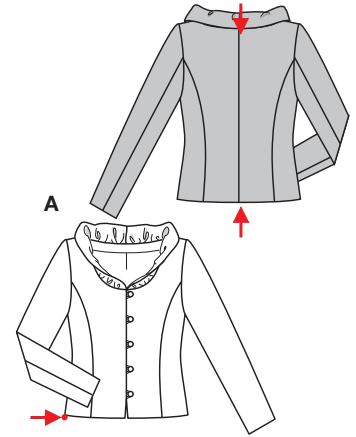
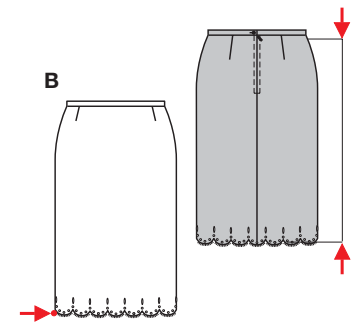


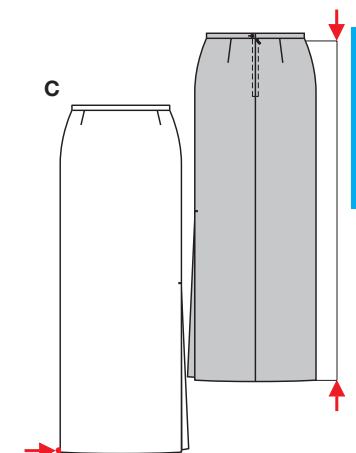
PLUS Größen • Tailles • Sizes
 Eur. : **38 - 50**
 US : **12 - 24**



↓
A 52 - 55 cm
 20 1/2" to 21 3/4"
 ↑
A 101 - 129 cm
 39 3/4" to 50 3/4"
 ↻



↓
B 67 cm
 26 1/2"
 ↑
B C 99 - 127 cm
 39" to 50"
 ↻



↓
C 107 cm
 42 1/4"
 ↑



mittel, moins facile, average, dificultad media.

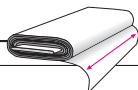
A: körpernah, ajusté, fitted;
Schulter • Epaule • Shoulder: normal, normale, average width.

BC: eng anliegend, très ajusté, close fitting.

Stoffempfehlung: Satin, Taft; B: Spitzenstoff mit einseitiger Bogenkante.

Tissus conseillés: satin, taffetas; B: tissu dentelle avec un bord festonné.

Recommended fabrics: satin, tafetta; B: lace fabric with single edge scalloped.



KOSTÜM • TAILLEUR • SUIT • TRAJE

Größen Tailles • Sizes	Eur. US	114 cm / 45 ins							140 cm / 55 ins						
		38	40	42	44	46	48	50	38	40	42	44	46	48	50
A	m yds	2.00 2 1/4	2.00 2 1/4	2.05 2 3/8	2.05 2 3/8	2.40 2 5/8	2.40 2 5/8	2.40 2 5/8	1.70 1 7/8	1.70 1 7/8	1.75 1 7/8	1.75 1 7/8	2.00 2 1/4	2.00 2 1/4	
A Futter • Doublure • Lining	m yds	1.25 1 1/2	1.25 1 1/2	1.25 1 1/2	1.60 1 3/4	1.60 1 3/4	1.60 1 3/4	1.15 1 1/8	1.15 1 1/8	1.15 1 1/8	1.15 1 1/8	1.25 1 1/2	1.25 1 1/2	1.25 1 1/2	
B einseitige Bogenkante • un bord festonné • single edge scalloped	m yds	1.20 1 3/8	1.20 1 3/8	1.25 1 1/2	1.30 1 1/2	1.35 1 3/8	1.45 1 3/4	1.45 1 3/4	1.20 1 1/8	1.20 1 1/8	1.25 1 1/2	1.30 1 1/2	1.35 1 3/8	1.45 1 3/4	
B Futter • Doublure • Lining	m yds	0.80 7/8	0.80 7/8	1.25 1 1/2	1.45 1 3/4	1.45 1 3/4	1.45 1 3/4	0.80 7/8	0.80 7/8	0.80 7/8	0.80 7/8	0.80 7/8	0.80 7/8	0.80 7/8	
C	m yds	1.25 1 1/2	1.25 1 1/2	2.30 2 5/8	2.30 2 5/8	2.30 2 5/8	2.30 2 5/8	1.25 1 1/2	1.25 1 1/2	1.25 1 1/2	1.25 1 1/2	1.25 1 1/2	1.25 1 1/2	1.25 1 1/2	

→ mit Richtung • avec sens • with nap

8326