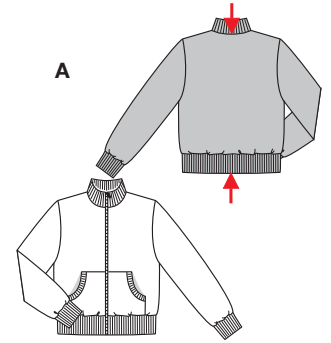
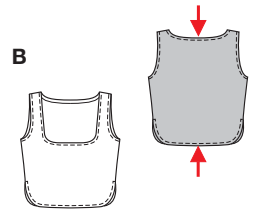


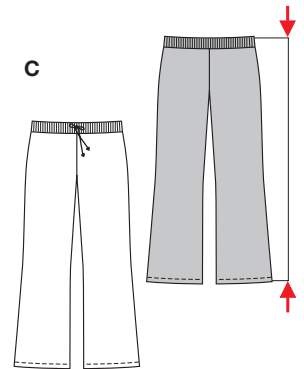
Größen • Tailles • Sizes
 Eur. : **34 - 46**
 US : **8 - 20**



A 54 - 57cm
 21 1/4" to 22 1/2"

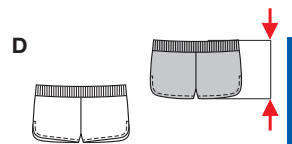


B 44 - 47cm
 17 1/4" to 18 1/2"



C 101 - 105cm
 39 3/4" to 41 1/2"

C 57 - 63cm
 22 1/2" to 24 3/4"



D 22 - 26cm
 8 3/4" to 10 1/4"



8328

KOMBINATION



leicht, facile, easy, fácil.

A: normal weit, semi-ajusté, semi-fitted; **Schulter**
Epaule • Shoulder: normal, normale, average width.
BCD: körpernah, ajusté, fitted.

Stoffempfehlung: Nur elastische Stoffe: Nickistoffe, Sweatshirtstoffe; Garniturstoff ACD: Rippenstrick.
Tissus conseillés: uniquement matières élastiques: velours éponge, tissu molletonné; Tissu garniture ACD: tissu à côtés.

Recommended fabrics: use elastic fabrics only: terry velour, sweatshirting; Contrasting fabric ACD: ribbed knit.

COORDONNEES • COORDINATES • COORDINADOS

Größen Tailles • Sizes	Eur. US	114 cm / 45 ins								140 cm / 55 ins							
		34	36	38	40	42	44	46	34	36	38	40	42	44	46		
A	m	1.10	1.10	1.15	1.15	1.40	1.40	1.40	1.05	1.05	1.10	1.10	1.10	1.10	1.15		
	yds	1 1/4	1 1/4	1 3/8	1 3/8	1 5/8	1 5/8	1 5/8	1 1/4	1 1/4	1 1/4	1 1/4	1 1/4	1 3/8			
		→	→	→	→	→	→	→	→	→	→	→	→	→			
A Garniturstoff • Tissu garniture Contrasting fabric	m								0.40	0.40	0.40	0.40	0.40	0.40			
	yds								1/2	1/2	1/2	1/2	1/2	1/2			
									→	→	→	→	→	→			
B	m	0.55	0.55	0.55	0.55	0.60	0.60	0.70	0.55	0.55	0.55	0.55	0.60	0.60			
	yds	3/4	3/4	3/4	3/4	3/4	3/4	7/8	3/4	3/4	3/4	3/4	3/4	3/4			
		→	→	→	→	→	→	→	→	→	→	→	→	→			
C	m	2.05	2.05	2.15	2.15	2.15	2.15	2.20	1.10	1.10	1.20	1.90	1.95	1.95			
	yds	2 3/8	2 3/8	2 1/2	2 1/2	2 1/2	2 1/2	2 1/2	1 1/4	1 1/4	1 3/8	2 1/8	2 1/4	2 1/4			
		→	→	→	→	→	→	→	→	→	→	→	→	→			
D	m	0.45	0.45	0.50	0.60	0.65	0.65	0.65	0.35	0.35	0.40	0.40	0.45	0.45			
	yds	5/8	5/8	5/8	3/4	7/8	7/8	7/8	1/2	1/2	1/2	1/2	5/8	5/8			
		→	→	→	→	→	→	→	→	→	→	→	→	→			
CD Garniturstoff • Tissu garniture Contrasting fabric	m								0.15	0.15	0.15	0.15	0.15	0.15			
	yds								1/4	1/4	1/4	1/4	1/4	1/4			
									→	→	→	→	→	→			

→ mit Richtung • avec sens • with nap