

Größen • Tailles • Sizes
Eur.: **46 - 56**
US: **36 - 46**



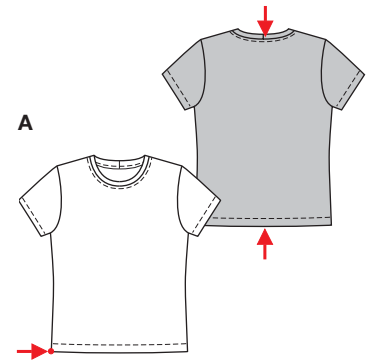
A



C

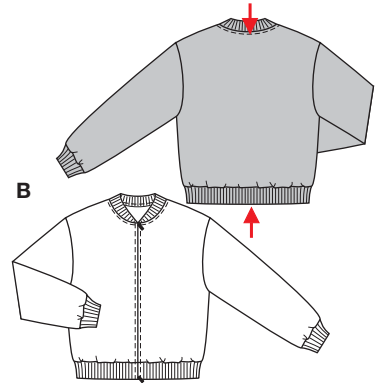


B



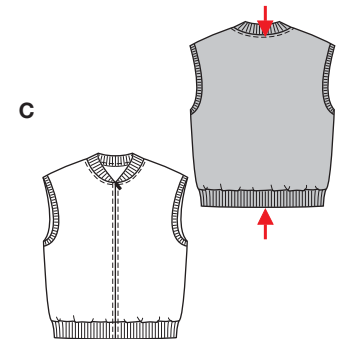
A

↓ A 69 - 75 cm
27¹/₄" to 29³/₄"
↑ A 98 - 118 cm
38³/₄" to 46¹/₂"



B

↓ BC 61 - 67 cm
24" to 26¹/₂"
↑



C

SHIRT + JACKE

● □ □ □
sehr leicht, très facile, very easy, muy fácil.

A: körpernah, ajusté, fitted.
BC: normal weit, semi-ajusté, semi-fitted; **Schulter • Epauale • Shoulder:** breit, large, broad.

Stoffempfehlung: Nur elastische Stoffe: Jersey, Sweatshirtstoffe; Garniturstoff BC: Rippenjersey.
Tissus conseillés: uniquement matières élastiques: jersey, tissu molletonné; Tissu garniture BC: jersey à côtés.

Recommended fabrics: use elastic fabrics only: jersey, sweatshirting; Contrasting fabric BC: ribbed jersey.

		114 cm / 45 ins						140 cm / 55 ins					
Größen Tailles • Sizes	Eur. US	46	48	50	52	54	56	46	48	50	52	54	56
A	m yds	1.05 →	1.35 →	1.75 →	1.75 →	1.75 →	1.75 →	1.05 →	1.10 →	1.10 →	1.10 →	1.10 →	1.10 →
B	m yds	1.35 →	1.35 →	1.35 →	1.35 →	1.95 →	1.95 →	1.30 →	1.30 →	1.35 →	1.35 →	1.35 →	1.35 →
B Garniturstoff • Tissu garniture Contrasting fabric	m yds							0.35 →	0.35 →	0.35 →	0.35 →	0.35 →	0.35 →
C	m yds	1.00 →	1.30 →	1.30 →	1.30 →	1.30 →	1.30 →	0.70 →	0.70 →	0.70 →	0.70 →	0.70 →	0.70 →
C Garniturstoff • Tissu garniture Contrasting fabric	m yds							0.35 →	0.35 →	0.35 →	0.35 →	0.35 →	0.35 →

→ mit Richtung • avec sens • with nap

JERSEY
KNITS

8329
★