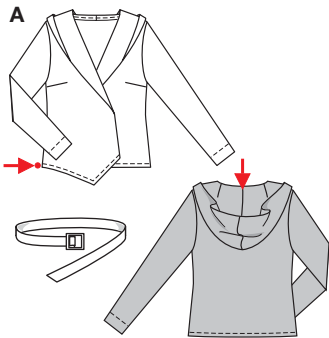


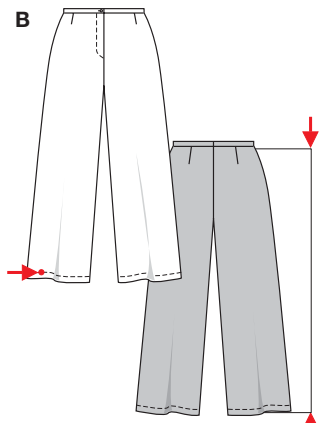
Größen • Tailles • Sizes

Eur.: **34 - 46**
US: **8 - 20**



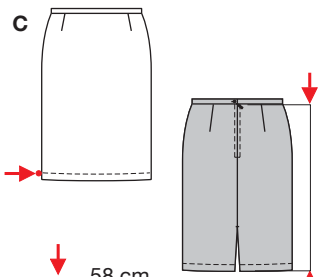
A 59 - 62 cm
23 1/4" to 24 1/2"

A 97 - 121 cm
38 1/4" to 47 3/4"



B 103 - 107 cm
40 3/4" to 42 1/4"

B 61 - 67 cm
24" to 26 1/2"



C 58 cm
23"

C 90 - 114 cm
35 1/2" to 45"



KOMBINATION



leicht, facile, easy, fácil.

A: normal weit, semi-ajusté, semi-fitted; **BC:** körpernah, ajusté, fitted.

Stoffempfehlung: Leinen, leichte Wollstoffe, Kreppstoffe.

Tissus conseillés: lin, tissus en laine légers, crêpe.
Recommended fabrics: linen, lightwt. wools, crepe fabric.

COORDONNEES • COORDINATES • COORDINADOS

| Größen Tailles • Sizes | Eur. US | 114 cm / 45 ins | | | | | | | | 140 cm / 55 ins | | | | | | | |
|---------------------------|------------|-----------------|-------|-------|-------|-------|-------|-------|-------|-----------------|-------|-------|-------|-------|-------|--|--|
| | | 34 | 36 | 38 | 40 | 42 | 44 | 46 | 34 | 36 | 38 | 40 | 42 | 44 | 46 | | |
| A | m | 2.85 | 2.90 | 2.90 | 2.95 | 3.00 | 3.00 | 3.00 | 2.40 | 2.45 | 2.45 | 2.50 | 2.55 | 2.55 | 2.55 | | |
| | yds | 3 1/4 | 3 1/4 | 3 1/4 | 3 3/8 | 3 3/8 | 3 3/8 | 3 3/8 | 2 5/8 | 2 3/4 | 2 3/4 | 2 3/4 | 2 7/8 | 2 7/8 | 2 7/8 | | |
| B | m | 2.15 | 2.25 | 2.30 | 2.30 | 2.30 | 2.30 | 2.30 | 1.20 | 1.25 | 1.65 | 2.10 | 2.10 | 2.10 | 2.10 | | |
| | yds | 2 1/2 | 2 5/8 | 2 5/8 | 2 5/8 | 2 5/8 | 2 5/8 | 2 5/8 | 1 1/8 | 1 1/2 | 1 7/8 | 2 3/8 | 2 3/8 | 2 3/8 | 2 3/8 | | |
| C | m | 0.75 | 0.75 | 0.75 | 0.75 | 1.40 | 1.40 | 1.40 | 0.75 | 0.75 | 0.75 | 0.75 | 0.75 | 0.75 | 0.75 | | |
| | yds | 7/8 | 7/8 | 7/8 | 7/8 | 1 5/8 | 1 5/8 | 1 5/8 | 7/8 | 7/8 | 7/8 | 7/8 | 7/8 | 7/8 | 7/8 | | |

→ mit Richtung • avec sens • with nap