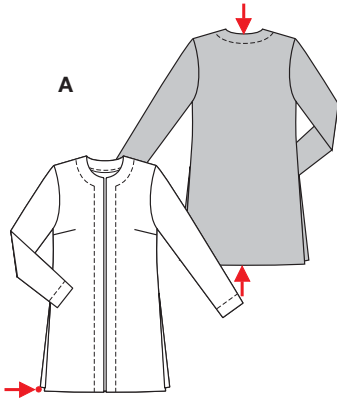
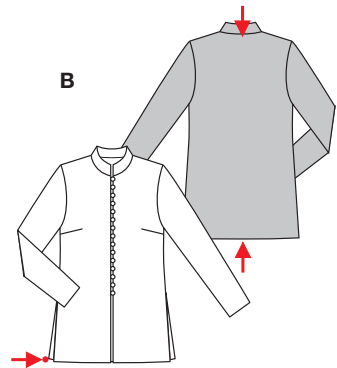


PLUS Größen • Tailles • Sizes
 Eur.: **36 - 50**
 US: **10 - 24**



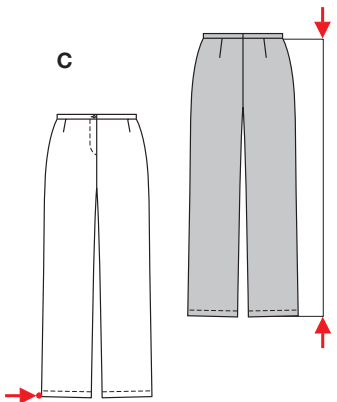
A 89 cm - 92 cm
 35" to 36 1/4"

A 112 - 144 cm
 44 1/4" to 56 3/4"



B 78 cm - 81 cm
 30 3/4" to 32"

B 109 - 141 cm
 43" to 55 1/2"



C 106 cm
 41 3/4"

C 46 - 53 cm
 18 1/8" to 21"



HOSENANZUG



leicht, facile, easy, fácil.

AB: normal weit, semi-ajusté, semi-fitted;

Schulter • Epaule

Shoulder: normal, normale, average width.

C: körpernah, ajusté, fitted.

Stoffempfehlung: Leinen, Dupionseide, Krepptoffe.

Tissus conseillés:

lin, soie dupion, crêpe.

Recommended fabrics: linen, dupion silk, crepe fabric.

ENSEMBLE-PANTALON • PANTSUIT • TRAJE PANTALON

Größen Tailles • Sizes	Eur. US	90 cm / 36 ins								140 cm / 55 ins							
		36	38	40	42	44	46	48	50	36	38	40	42	44	46	48	50
A	m	3.00	3.00	3.00	3.05	3.30	3.40	3.40	3.60	2.00	2.00	2.05	2.05	2.05	2.15	2.80	2.80
	yds	3 3/8	3 3/8	3 3/8	3 1/2	3 5/8	3 3/4	3 3/4	4	2 1/4	2 1/4	2 3/8	2 3/8	2 3/8	2 1/2	3 1/8	3 1/8
B	m	2.70	2.70	2.70	2.75	2.75	3.00	3.00	3.00	1.80	1.80	1.80	1.85	1.85	1.90	2.35	2.35
	yds	3	3	3	3 1/8	3 1/8	3 3/8	3 3/8	3 3/8	2	2	2	2 1/8	2 1/8	2 1/8	2 5/8	2 5/8
C	m	2.20	2.20	2.20	2.20	2.20	2.30	2.30	2.40	1.20	1.20	1.45	1.55	1.70	1.95	1.95	2.05
	yds	2 1/2	2 1/2	2 1/2	2 1/2	2 1/2	2 5/8	2 5/8	2 5/8	1 3/8	1 3/8	1 3/4	1 3/4	1 7/8	2 1/4	2 1/4	2 3/8

→ mit Richtung • avec sens • with nap

★ ohne Richtung • sans sens • without nap

8332