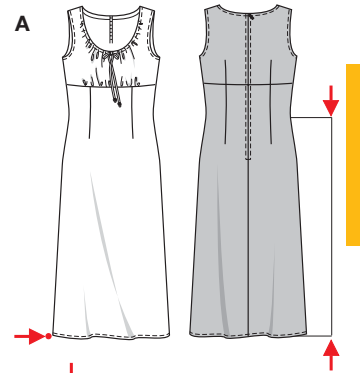
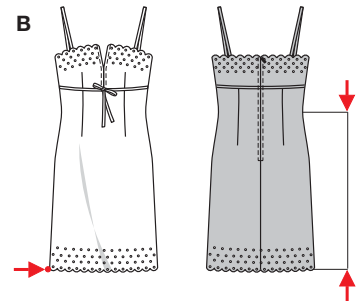


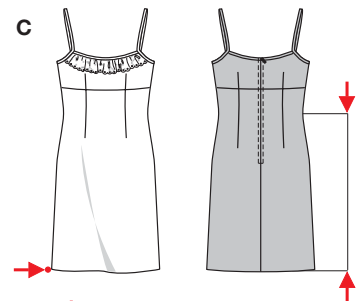
Größen • Tailles • Sizes
 Eur.: **34 - 46**
 US: **8 - 20**



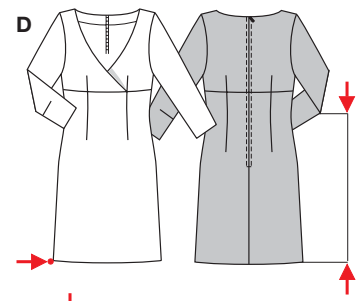
A 85 cm
33 1/2"
 A 107 - 131 cm
42 1/4" to 51 1/2"



BC 60 cm
23 3/4"



BC 60 cm
23 3/4"



D 56 cm
22 1/4"
 B C D 100 - 125 cm
39 1/2" to 49 1/2"



leicht, facile, easy, fácil.

ABCD: eng anliegend, très ajusté, close fitting.

Stoffempfehlung: Satin, Kreppstoffe, Viskose, Batist; B: mit einseitiger Bogenkante; D: Stoffe mit Elastan.

Tissus conseillés: satin, crêpe, viscose, batiste; B: avec un bord festonné. D: tissus avec élasthanne.

Recommended fabrics: satin, crepe fabric, batiste; B: with single edges scalloped; D: fabric with elastane.

KLEID • ROBE • DRESS • VESTIDO

Größen Tailles • Sizes	Eur. US	114 cm / 45 ins								140 cm / 55 ins							
		34	36	38	40	42	44	46	34	36	38	40	42	44	46		
A	m yds	1.85 2 1/8	1.85 2 1/8	2.00 2 1/4	2.40 2 5/8	2.55 2 7/8	2.85 3 1/4	2.85 3 1/4	1.75 2	1.75 2	1.80 2	1.80 2	1.80 2	1.85 2 1/8	1.85 2 1/8		
B einseitige Bogenkante un bord festonné single edges scalloped	m yds	2.20 2 1/2	2.30 2 5/8	2.40 2 5/8	2.45 2 3/4	2.50 2 3/4	2.60 2 7/8	2.60 2 7/8	2.20 2 1/2	2.30 2 5/8	2.40 2 3/4	2.45 2 3/4	2.50 2 3/4	2.60 2 7/8	2.60 2 7/8		
B Futter • Doublure Lining	m yds	0.75 7/8	0.75 7/8	0.75 7/8	1.00 1 1/8	1.15 1 3/8	1.45 1 3/4	1.45 1 3/4	0.75 7/8	0.75 7/8	0.75 7/8	0.75 7/8	0.75 7/8	0.75 7/8	0.75 7/8		
C	m yds	1.25 1 1/2	1.25 1 1/2	1.25 1 1/2	1.45 1 3/4	1.65 1 7/8	1.85 2 1/8	1.85 2 1/8	1.25 1 1/2	1.25 1 1/2	1.25 1 1/2	1.25 1 1/2	1.30 1 1/2	1.30 1 1/2	1.30 1 1/2		
D	m yds	1.65 1 7/8	1.65 1 7/8	1.65 1 7/8	1.90 2 1/8	2.15 2 1/2	2.25 2 5/8	2.25 2 5/8	1.60 1 3/4	1.60 1 3/4	1.65 1 7/8	1.65 1 7/8	1.65 1 7/8	1.70 1 7/8	1.70 1 7/8		

→ mit Richtung • avec sens • with nap

★ ohne Richtung • sans sens • without nap

8348