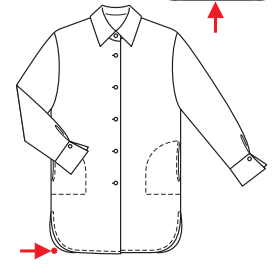
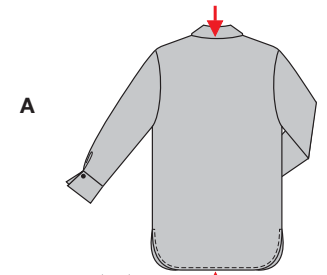
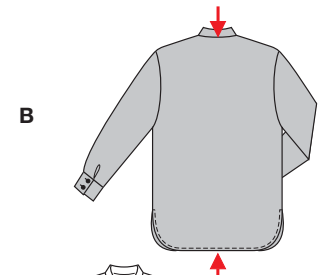


**PLUS** Größen • Tailles • Sizes  
 Eur.: **36 - 50**  
 US: **10 - 24**



↓  
**A** ↑  
 89 - 92 cm  
 35" to 36 1/4"



↓  
**B** ↑  
 80 - 83 cm  
 31 1/2" to 32 3/4"

↓  
**AB** ↑  
 114 - 143 cm  
 45" to 56 1/2"



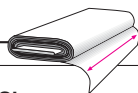
leicht, facile, easy, fácil.

**AB:** sehr weit, très ample, very loose fitting; **Schulter Epaule • Shoulder:** breit, large, broad.

**Stoffempfehlung:** Batist, Baumwollstoffe, Leinenmischgewebe.

**Tissus conseillés:** batiste, tissus en coton, lin mélangé.

**Recommended fabrics:** batiste, cottons, linen blends.



**BLUSE • BLOUSE • BLUSA**

Größen Tailles • Sizes	Eur. US	114 cm / 45 ins				140 cm / 55 ins			
		36/38 10/12	40/42 14/16	44/46 18/20	48/50 22/24	36/38 10/12	40/42 14/16	44/46 18/20	48/50 22/24
A	m yds	2.30 2 5/8 ★	2.45 2 3/4 ★	2.50 2 3/4 ★	2.60 2 7/8 ★	1.90 2 1/8 ★	2.05 2 1/8 ★	2.10 2 3/8 ★	2.20 2 1/2 ★
B	m yds	1.95 2 1/4 ★	2.25 2 5/8 ★	2.30 2 5/8 ★	2.40 2 5/8 ★	1.60 1 3/4 ★	1.85 2 1/8 ★	1.90 2 1/8 ★	2.00 2 1/4 ★

★ ohne Richtung • sans sens • without nap

**8358**