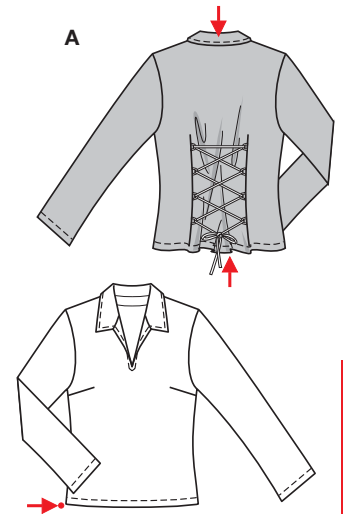
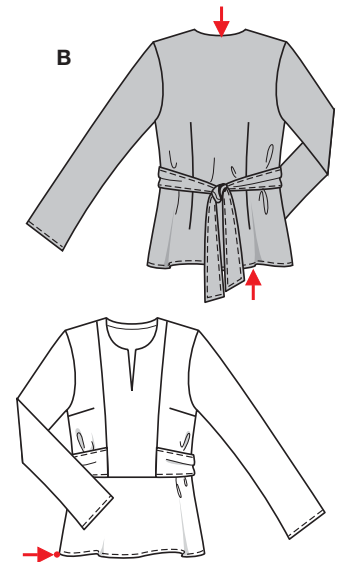


Größen • Tailles • Sizes
 Eur. : **34 - 46**
 US : **8 - 20**



A 56 - 59 cm
 22¹/₄" to 23¹/₄"



B 64 - 67 cm
 25¹/₄" to 26¹/₂"

A B 96 - 120 cm
 37³/₄" to 47¹/₄"

8365

BLUSE • BLOUSE • BLUSA



leicht, facile, easy, fácil.

AB: weit, ample, loose fitting; **Schulter • Epaule** **Shoulder:** normal, normale, average width.

Stoffempfehlung: Baumwollstoffe, Viskose, Satin.
Tissus conseillés: tissus en coton, viscose, satin.

Recommended fabrics: cottons, viscose rayon, satin.

Größen Tailles • Sizes	Eur. US	114 cm / 45 ins						140 cm / 55 ins						
		34 8	36 10	38 12	40 14	42 16	44 18	46 20	34 8	36 10	38 12	40 14	42 16	44 18
A	m	1.80	1.80	1.80	1.85	1.85	1.85	1.50	1.50	1.50	1.55	1.55	1.55	1.55
	yds	2 →	2 →	2 →	2 ¹ / ₈ →	2 ¹ / ₈ →	2 ¹ / ₈ →	1 ³ / ₄ →	1 ³ / ₄ →	1 ³ / ₄ →	1 ³ / ₄ →	1 ³ / ₄ →	1 ³ / ₄ →	1 ³ / ₄ →
B	m	2.10	2.10	2.10	2.15	2.15	2.15	1.50	1.50	1.50	1.55	1.55	1.90	1.90
	yds	2 ³ / ₈ →	2 ³ / ₈ →	2 ³ / ₈ →	2 ¹ / ₂ →	2 ¹ / ₂ →	2 ¹ / ₂ →	1 ³ / ₄ →	1 ³ / ₄ →	1 ³ / ₄ →	1 ³ / ₄ →	1 ³ / ₄ →	2 ¹ / ₈ →	2 ¹ / ₈ →

→ mit Richtung • avec sens • with nap

8359