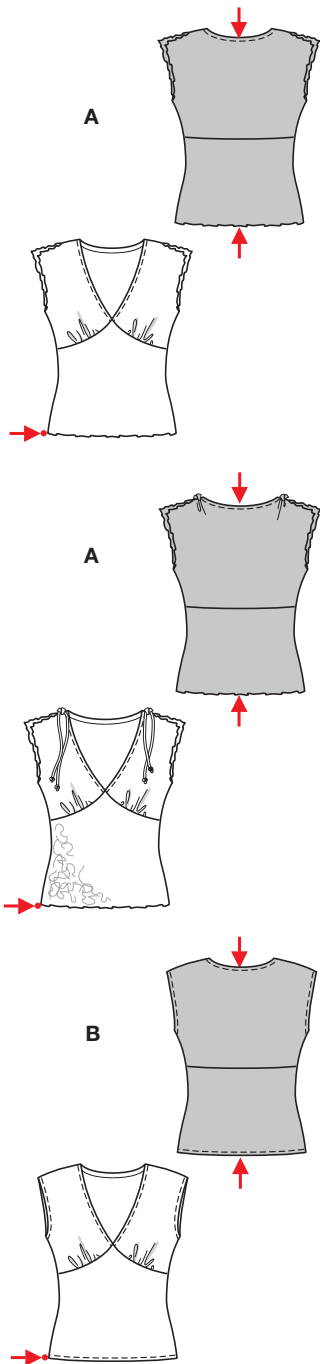


Größen • Tailles • Sizes
 Eur.: **32 - 44**
 US: **6 - 18**



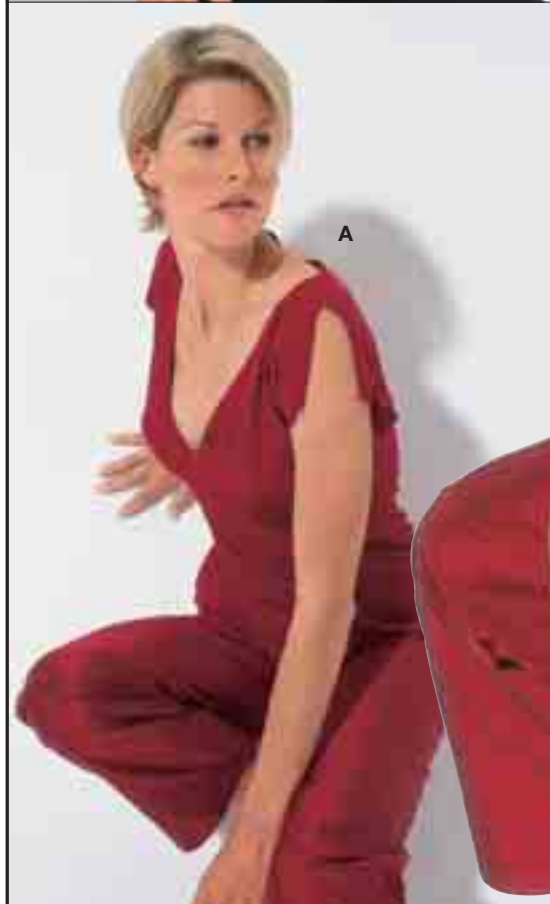
AB 56 - 59 cm
 22 1/4" to 23 1/4"

AB 86 - 110 cm
 34" to 43 1/2"

JERSEY



8361



leicht, facile, easy, fácil.

AB:
 körpernah, ajusté, fitted.

Stoffempfehlung: Jersey, elastischer Netzjersey.

Tissus conseillés: jersey, jersey filet élastique.

Recommended fabrics: jersey, elastic net jersey.

SHIRT • T-SHIRT • CAMISETA

Größen Tailles • Sizes	Eur. US	114 cm / 45 ins								140 cm / 55 ins							
		32 6	34 8	36 10	38 12	40 14	42 16	44 18	32 6	34 8	36 10	38 12	40 14	42 16	44 18		
A je Stoff • par tissu each fabric	m yds	1.15 →	1.15 1 3/8	1.20 1 3/8	1.20 →	1.20 1 3/8	1.20 1 3/8	1.20 →	0.75 7/8	0.75 →	0.75 7/8	0.75 →	0.75 7/8	0.75 →	0.75 7/8		
B	m yds	0.85 →	0.85 →	0.85 →	1.10 1 1/4	1.10 →	1.10 1 1/4	1.20 →	0.70 7/8	0.70 →	0.70 7/8	0.75 →	0.75 7/8	0.75 →	0.75 7/8		

→ mit Richtung • avec sens • with nap