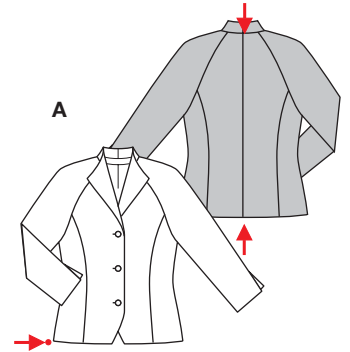


PLUS Größen • Tailles • Sizes
 Eur. : **18 - 25**
 US : **10 - 24**

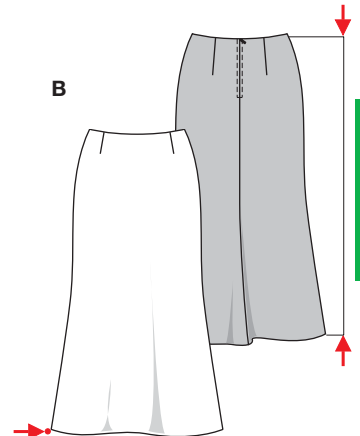
KURZE GRÖSSEN



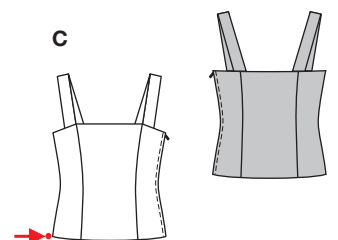
**PETITE TAILLE
 PETITE SIZES**



↓
A 61 - 64 cm
 24" to 25 1/4"
 ↑
A 102 - 134 cm
 40 1/4" to 52 3/4"



↓
B 106 cm
 41 3/4"
 ↑
B 158 - 190 cm
 62 1/4" to 75"



↓
C 97 - 129 cm
 38 1/4" to 50 3/4"
 ↑

KOMBINATION



mittel, moins facile, average, dificultad media.

A: körpernah, ajusté, fitted;
BC: eng anliegend, très ajusté, close fitting.

Stoffempfehlung: Kreppsatin, Duchesse, Dupionseide.

Tissus conseillés: satin en crêpe, duchesse, soie dupion.

Recommended fabrics: crepe satin, duchesse, dupion silk

		COORDONNEES • COORDINATES • COORDINADOS															
		114 cm / 45 ins															
Größen • Tailles	Eur.	18	19	20	21	22	23	24	25	18	19	20	21	22	23	24	25
Sizes (Miss petite 5'3")	US	10	12	14	16	18	20	22	24	10	12	14	16	18	20	22	24
A	m	1.80	1.80	2.10	2.15	2.15	2.30	2.35	2.35	1.60	1.60	1.60	1.60	1.90	1.90	1.90	1.90
	yds	2	2	2 3/8	2 1/2	2 1/2	2 5/8	2 5/8	2 5/8	1 3/4	1 3/4	1 3/4	1 3/4	2 1/8	2 1/8	2 1/8	2 1/8
A Futter • Doublure	m	1.20	1.20	1.20	1.20	1.60	1.60	1.65	1.65	1.15	1.15	1.15	1.20	1.20	1.20	1.20	1.20
Lining	yds	1 3/8	1 3/8	1 3/8	1 3/8	1 3/4	1 3/4	1 7/8	1 7/8	1 3/8	1 3/8	1 3/8	1 3/8	1 3/8	1 3/8	1 3/8	1 3/8
B	m	2.40	2.40	2.40	2.40	2.40	2.40	2.40	2.40	1.30	1.45	1.55	1.95	2.00	2.15	2.40	2.40
	yds	2 5/8	2 5/8	2 5/8	2 5/8	2 5/8	2 5/8	2 5/8	2 5/8	1 1/2	1 3/4	1 3/4	2	2 1/4	2 5/8	2 5/8	2 5/8
B Futter • Doublure	m	2.25	2.25	2.25	2.25	2.25	2.25	2.25	2.25	1.25	1.35	1.45	1.80	1.95	2.05	2.25	2.25
Lining	yds	2 5/8	2 5/8	2 5/8	2 5/8	2 5/8	2 5/8	2 5/8	2 5/8	1 1/2	1 3/8	1 3/4	2	2 1/4	2 5/8	2 5/8	2 5/8
C	m	1.00	1.00	1.05	1.05	1.05	1.10	1.10	1.10	0.65	0.65	0.65	0.65	0.65	0.85	0.95	0.95
	yds	1 1/8	1 1/8	1 1/4	1 1/4	1 1/4	1 1/4	1 1/4	1 1/4	7/8	7/8	7/8	7/8	7/8	1	1 1/8	1 1/8

→ mit Richtung • avec sens • with nap

★ ohne Richtung • sans sens • without nap

8374