

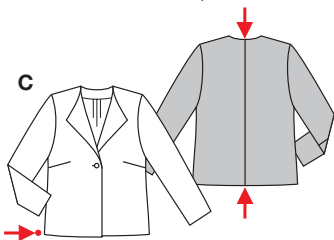
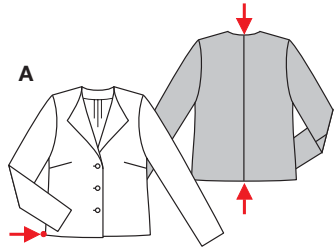
Größen • Tailles • Sizes

Eur.: **16 - 23**
US: **6 - 20**

KURZE GRÖSSEN

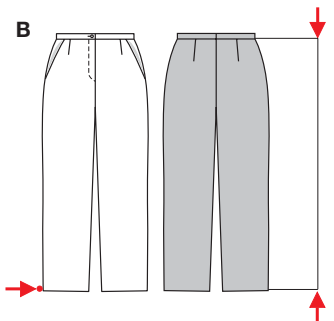


**PETITE TAILLE
PETITE SIZES**



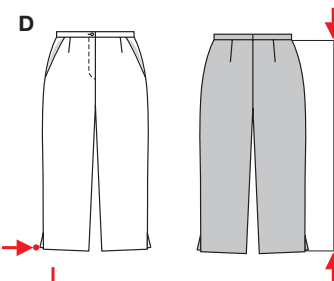
AC 57 - 61 cm
22¹/₂" to 24"

AC 92 - 120 cm
36¹/₄" to 47¹/₄"



B 98 - 103 cm
38³/₄" to 40³/₄"

B 43 - 50 cm
17" to 19³/₄"



D 81 - 86 cm
32" to 34"

D 44 - 52 cm
17¹/₄" to 20¹/₂"



A

B



C

D

HOSENANZUG



sehr leicht, très facile, very easy, muy fácil.

AC: normal weit, semi-ajusté, semi-fitted; **Schulter**

Epaule • Shoulder: normal, normale, average width.

BD: eng anliegend, très ajusté, close fitting.

Stoffempfehlung: Leinen, Kreppstoffe, Gabardine.

Tissus conseillés: lin, crêpe, gabardine.

Recommended fabrics: linen, crepe fabrics, gabardine.

ENSEMBLE-PANTALON • PANTSUIT • TRAJE PANTALON

Größen • Tailles Sizes (Miss petite 5'3")	Eur. US	114 cm / 45 ins								140 cm / 55 ins							
		16	17	18	19	20	21	22	23	16	17	18	19	20	21	22	23
A C	m	1.80	1.80	1.90	2.05	2.05	2.10	2.10	2.10	1.40	1.40	1.40	1.40	1.40	1.45	1.45	1.85
	yds	2	2	2 ¹ / ₈	2 ³ / ₈	2 ³ / ₈	2 ³ / ₈	2 ³ / ₈	2 ³ / ₈	1 ⁵ / ₈	1 ⁵ / ₈	1 ⁵ / ₈	1 ⁵ / ₈	1 ⁵ / ₈	1 ³ / ₄	1 ³ / ₄	2 ¹ / ₈
B	m	1.95	1.95	1.95	1.95	2.05	2.20	2.20	2.20	1.40	1.40	1.40	1.55	1.55	1.80	1.95	1.95
	yds	2 ¹ / ₄	2 ¹ / ₄	2 ¹ / ₄	2 ¹ / ₄	2 ³ / ₈	2 ¹ / ₂	2 ¹ / ₂	2 ¹ / ₂	1 ⁵ / ₈	1 ⁵ / ₈	1 ⁵ / ₈	1 ³ / ₄	1 ³ / ₄	2	2 ¹ / ₄	2 ¹ / ₄
D	m	1.60	1.60	1.60	1.60	1.70	1.85	1.85	1.85	1.20	1.20	1.20	1.55	1.55	1.55	1.60	1.60
	yds	1 ³ / ₄	1 ³ / ₄	1 ³ / ₄	1 ³ / ₄	1 ⁷ / ₈	2 ¹ / ₈	2 ¹ / ₈	2 ¹ / ₈	1 ⁵ / ₈	1 ⁵ / ₈	1 ⁵ / ₈	1 ³ / ₄	1 ³ / ₄	1 ³ / ₄	1 ³ / ₄	1 ³ / ₄

→ mit Richtung • avec sens • with nap

8375