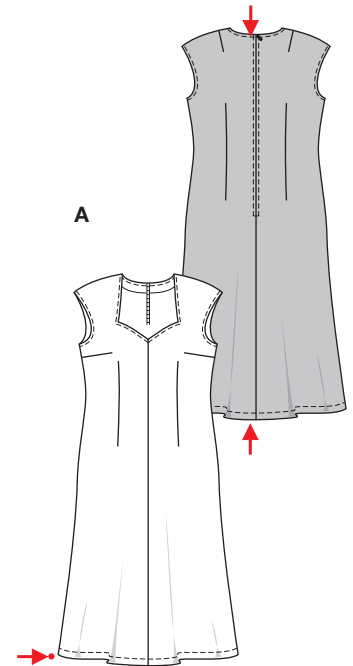
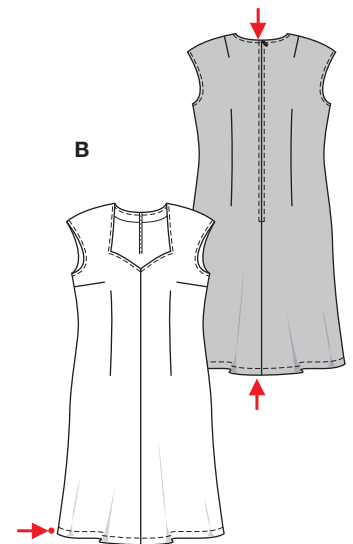


PLUS Größen • Tailles • Sizes
 Eur.: **44 - 60**
 US: **18 - 34**



A 132 - 136 cm
 52" to 53 1/2"
A 190 - 236 cm
 2 1/8 yds to 2 5/8 yds



B 116 - 120 cm
 45 3/4" to 47 1/4"
B 171 - 217 cm
 1 7/8 yds to 2 1/2 yds



leicht, facile, easy, fácil.

AB: normal weit, semi-ajusté, semi-fitted.

Stoffempfehlung: Viskose, Leinenmischgewebe, Georgette.

Tissus conseillés: viscose, lin mélangé, georgette.

Recommended fabrics: viscose rayon, linen blends, georgette.

KLEID • ROBE • DRESS • VESTIDO

Größen Tailles • Sizes	Eur. US	114 cm / 45 ins										140 cm / 55 ins									
		44	46	48	50	52	54	56	58	60	44	46	48	50	52	54	56	58	60		
A	m	3.15	3.15	3.20	3.20	3.50	3.50	3.50	3.50	3.55	2.90	2.90	2.90	2.90	2.95	2.95	3.25	3.25	3.30		
	yds	3 1/2	3 1/2	3 1/2	3 1/2	3 3/8	3 3/8	3 3/8	3 3/8	4	3 1/4	3 1/4	3 1/4	3 1/4	3 3/8	3 3/8	3 5/8	3 5/8	3 5/8		
B	m	2.85	2.85	2.90	2.90	2.95	2.95	3.00	3.00	3.20	2.55	2.55	2.60	2.60	2.65	2.65	2.95	2.95	2.95		
	yds	3 1/4	3 1/4	3 1/4	3 1/4	3 3/8	3 3/8	3 3/8	3 3/8	3 1/2	2 1/8	2 1/8	2 1/8	2 1/8	3	3	3 3/8	3 3/8	3 3/8		

→ mit Richtung • avec sens • with nap

★ ohne Richtung • sans sens • without nap

8379