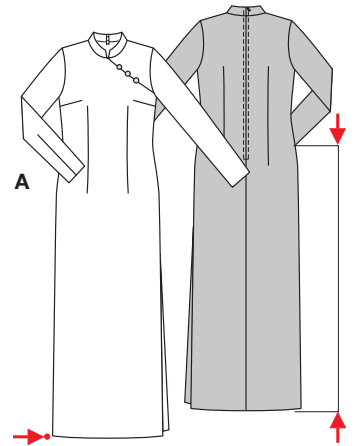
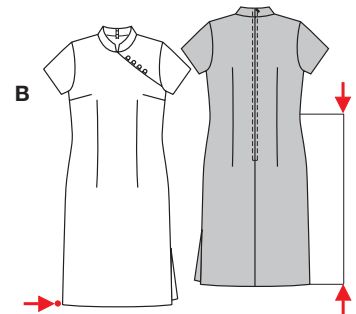


**PLUS** Größen • Tailles • Sizes  
 Eur.: **36 - 48**  
 US: **10 - 22**



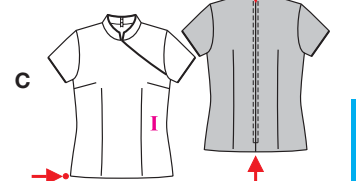
A 109 cm  
43"

A 102 - 128 cm  
40 1/4" to 50 1/2"



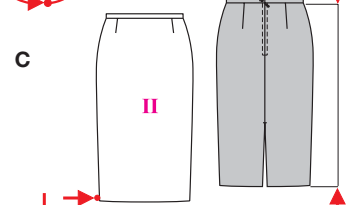
B 60 cm  
23 3/4"

B 100 - 126 cm  
39 1/2" to 49 3/4"



C 57 - 60 cm  
22 1/2" to 23 3/4"

C 98 - 124 cm  
38 3/4" to 49"



C 70 cm  
27 3/4"

C 86 - 112 cm  
34" to 44 1/4"



mittel, moins facile, average, dificultad media.

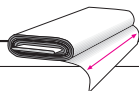
**ABC:** normal weit, semi-ajusté, semi-fitted; **Schulter Epaule • Shoulder:** normal, normale, average width.

**Rock • Jupe • Skirt C:** eng anliegend, très ajusté, close fitting.

**Stoffempfehlung:** Satin, Jacquard, Pannesamt; A: auch Georgette.

**Tissus conseillés:** satin, jacquard, panne velours; A: aussi georgette.

**Recommended fabrics:** satin, jacquard, panne velvet; A: also georgette.



## KLEID • ROBE • DRESS • VESTIDO

Größen Tailles • Sizes	Eur. US	114 cm / 45 ins								140 cm / 55 ins							
		36	38	40	42	44	46	48	36	38	40	42	44	46	48		
A	m	2.85	3.00	3.05	3.10	3.15	3.20	3.20	2.30	2.30	2.30	2.30	2.30	2.30	2.70		
	yds	3 1/4	3 3/8	3 3/4	3 1/2	3 1/2	3 1/2	3 1/2	2 5/8	2 5/8	2 5/8	2 5/8	2 5/8	2 5/8	3		
A Futter • Doublure Lining	m	1.60	2.20	2.40	2.75	2.75	2.95	1.60	1.65	1.65	1.65	1.65	1.65	1.65			
	yds	1 3/4	2 1/2	2 5/8	3 1/8	3 1/8	3 3/8	1 3/4	1 7/8	1 7/8	1 7/8	1 7/8	1 7/8	1 7/8			
B	m	1.65	2.05	2.05	2.10	2.10	2.10	2.30	1.40	1.40	1.40	1.40	1.70	1.70	1.80		
	yds	1 1/8	2 1/8	2 1/8	2 3/8	2 3/8	2 3/8	2 5/8	1 5/8	1 5/8	1 5/8	1 5/8	1 7/8	1 7/8	2		
C I	m	1.00	1.20	1.20	1.25	1.25	1.30	1.45	1.00	1.05	1.05	1.05	1.10	1.10	1.10		
	yds	1 1/8	1 3/8	1 3/8	1 1/2	1 1/2	1 1/2	1 3/4	1 1/8	1 1/4	1 1/4	1 1/4	1 1/4	1 1/4	1 1/4		
C II	m	0.85	0.85	0.85	1.10	1.45	1.55	1.55	0.85	0.85	0.85	0.85	0.85	0.85	0.85		
	yds	1	1	1	1 1/4	1 3/4	1 3/4	1 3/4	1	1	1	1	1	1	1		
C Futter • Doublure Lining	m	0.80	0.80	0.80	0.85	1.30	1.40	1.50	0.80	0.80	0.80	0.80	0.80	0.80	0.80		
	yds	7/8	7/8	7/8	1	1 1/2	1 5/8	1 3/4	7/8	7/8	7/8	7/8	7/8	7/8	7/8		

→ mit Richtung • avec sens • with nap

8438