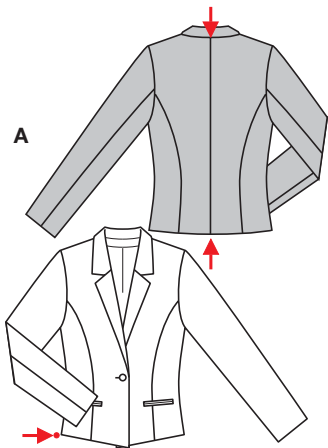


Größen • Tailles • Sizes

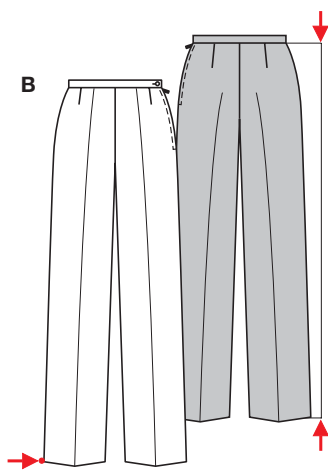
Eur.: **34 - 44**

US: **8 - 18**



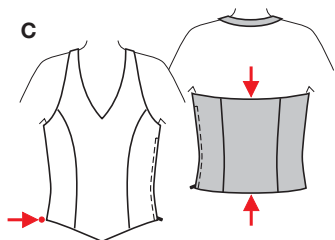
A 55 - 57 cm
21³/₄" to 22¹/₂"

A 94 - 114 cm
37" to 45"



B 105 - 108 cm
41¹/₂" to 42¹/₂"

B 46 - 54 cm
18¹/₈" to 21¹/₄"



C 29 cm
11¹/₂"

C 88 cm - 108 cm
34³/₄" to 42¹/₂"



KOMBINATION



mittel, moins facile, average, dificultad media.

A: körpernah, ajusté, fitted;

Schulter • Epauale

Shoulder: normal, normale, average width;

BC: eng anliegend, très ajusté, close fitting.

Stoffempfehlung:

Duchesse, Dupionseide, Kreppsatin; C: Spitzenstoff.

Tissus conseillés: duchesse, soie dupion, satin crêpe; C: Tissu dentelle.

Recommended fabrics: duchesse, dupion silk, crêpe satin; C: lace fabric.

COORDONNEES • COORDINATES • COORDINADOS

Größen Tailles • Sizes	Eur. US	114 cm / 45 ins						140 cm / 55 ins					
		34 8	36 10	38 12	40 14	42 16	44 18	34 8	36 10	38 12	40 14	42 16	44 18
A	m yds	1.80 2	1.80 2	1.95 2 ¹ / ₄	1.95 2 ¹ / ₄	2.00 2 ¹ / ₄	2.00 2 ¹ / ₄	1.50 1 ³ / ₄	1.50 1 ³ / ₄	1.50 1 ³ / ₄	1.70 1 ⁷ / ₈	1.70 1 ⁷ / ₈	1.70 1 ⁷ / ₈
A Futter • Doublure Lining	m yds	1.45 1 ³ / ₄	1.45 1 ³ / ₄	1.50 1 ³ / ₄	1.50 1 ³ / ₄	1.50 1 ³ / ₄	1.50 1 ³ / ₄	1.25 1 ¹ / ₂	1.25 1 ¹ / ₂	1.25 1 ¹ / ₂	1.25 1 ¹ / ₂	1.25 1 ¹ / ₂	1.25 1 ¹ / ₂
B	m yds	2.05 2 ³ / ₈	2.05 2 ³ / ₈	2.15 2 ¹ / ₂	2.30 2 ⁵ / ₈	2.30 2 ⁵ / ₈	2.30 2 ⁵ / ₈	1.25 1 ¹ / ₂	1.25 1 ¹ / ₂	1.50 1 ³ / ₄	1.60 1 ³ / ₄	1.80 2	2.10 2 ³ / ₈
C Stoff + Futter, je Tissu + doublure, par Fabric + lining, each	m yds	0.75 7/8	0.75 7/8	0.75 7/8	0.80 7/8	0.80 7/8	0.80 7/8	0.70 7/8	0.70 7/8	0.70 7/8	0.70 7/8	0.70 7/8	0.70 7/8

→ mit Richtung • avec sens • with nap

★ ohne Richtung • sans sens • without nap