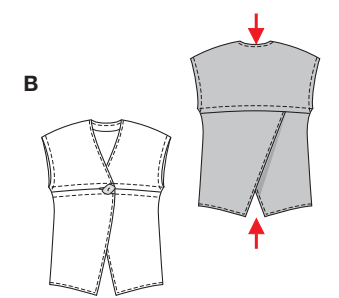
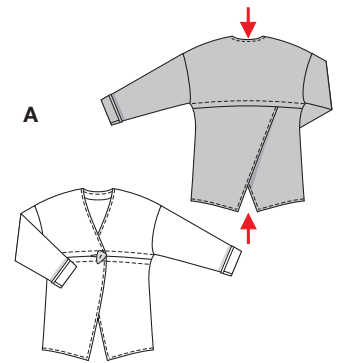
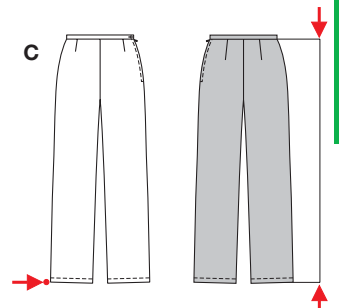


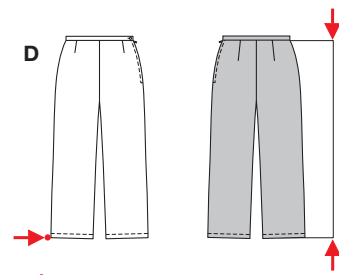
Größen • Tailles • Sizes
Eur.: **32 - 42**
US: **6 - 16**



A B 72 - 75 cm
28 1/2" to 29 3/4"



C 105 - 108 cm
41 1/2" to 42 1/2"



D 85 - 88 cm
33 1/2" to 34 3/4"

C D 46 - 55 cm
18 1/8" to 21 3/4"

HOSENANZUG

sehr leicht, très facile, very easy, muy fácil.

AB: weit, ample, loose fitting; **Schulter • Epaule**

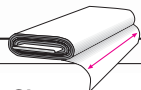
Shoulder: sehr breit, très large, extra broad.

CD: eng anliegend, très ajusté, close fitting.

Stoffempfehlung: Leinen, Leinenmischgewebe.

Tissus conseillés: lin, lin mélangé.

Recommended fabrics: linen, linen blends.



ENSEMBLE-PANTALON • PANTSUIT • TRAJE PANTALON

Größen Tailles • Sizes	Eur. US	114 cm / 45 ins						140 cm / 55 ins					
		32 6	34 8	36 10	38 12	40 14	42 16	32 6	34 8	36 10	38 12	40 14	42 16
A	m yds	1.60 1 3/4	2.00 2 1/4	2.00 2 1/4	2.05 2 3/8	2.10 2 3/8	2.15 2 1/2	1.55 1 3/4	1.55 1 3/4	1.55 1 3/4	1.60 1 3/4	1.60 1 3/4	1.60 1 3/4
B	m yds	1.40 1 5/8	1.40 1 5/8	1.45 1 3/4	1.45 1 3/4	1.50 1 3/4	1.55 1 3/4	1.05 1 1/4	1.30 1 1/2	1.30 1 1/2	1.30 1 1/2	1.30 1 1/2	1.35 1 5/8
C	m yds	2.00 2 1/4	2.00 2 1/4	2.05 2 3/8	2.10 2 3/8	2.20 2 1/2	2.30 2 5/8	1.15 1 1/8	1.15 1 1/8	1.20 1 1/8	2.10 2 3/8	2.10 2 3/8	2.10 2 3/8
D	m yds	1.65 1 7/8	1.70 1 7/8	1.70 1 7/8	1.75 2	1.90 2 1/8	1.90 2 1/8	0.95 1 1/8	0.95 1 1/8	1.20 1 3/8	1.60 1 3/4	1.65 1 7/8	1.65 1 7/8

→ mit Richtung • avec sens • with nap

★ ohne Richtung • sans sens • without nap

8478