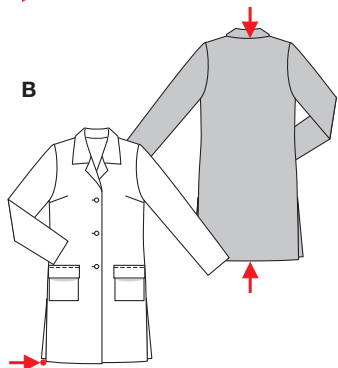
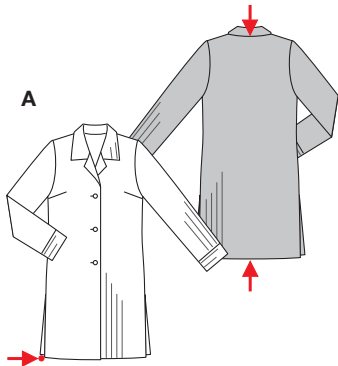


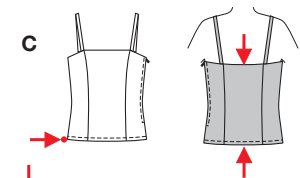
Größen • Tailles • Sizes

Eur.: **34 - 46**
US: **8 - 20**



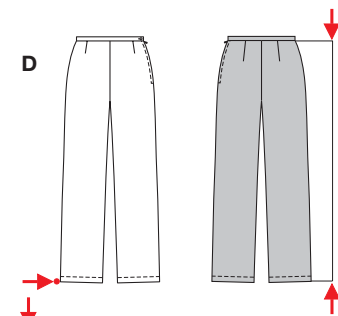
AB 96 - 99 cm
37³/₄" to 39"

AB 100 - 124 cm
39¹/₂" to 49"



C 33 cm
13"

C 88 - 112 cm
34³/₄" to 44¹/₄"



D 103 - 107 cm
40³/₄" to 42¹/₄"

D 47 - 53 cm
18¹/₂" to 21"

A+C

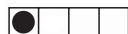


B+C



D

D



sehr leicht, très facile,
very easy, muy fácil.

AB: normal weit, semi-ajusté, semi-fitted; **Schulter Epaule • Shoulder:** normal, normale, average width.

CD: eng anliegend, très ajusté, close fitting.

Stoffempfehlung: Leinen, Leinenmischgewebe, Viskose, Baumwollstoffe.

Tissus conseillés: lin, lin mélangé, viscose, tissus en coton.

Recommended fabrics: linen, linen blends, viscose rayon, cottons.

KOMBINATION

COORDONNEES • COORDINATES • COORDINADOS

Größen Tailles • Sizes	Eur. US	114 cm / 45 ins						140 cm / 55 ins							
		34 8	36 10	38 12	40 14	42 16	44 18	46 20	34 8	36 10	38 12	40 14	42 16	44 18	46 20
A quergestreifter Stoff tissu à rayures horizontales horizontally striped fabric	m	2.30	2.30	2.35	2.40	2.45	2.55	2.55	2.10	2.10	2.15	2.20	2.35	2.35	2.35
	yds	2 ⁵ / ₈ *	2 ⁵ / ₈ *	2 ⁵ / ₈ *	2 ⁵ / ₈ *	2 ⁵ / ₈ *	2 ⁷ / ₈ *	2 ⁷ / ₈ *	2 ³ / ₈ *	2 ³ / ₈ *	2 ³ / ₈ *	2 ¹ / ₂ *	2 ⁵ / ₈ *	2 ⁵ / ₈ *	2 ⁵ / ₈ *
B	m	2.45	2.45	2.45	2.45	2.75	2.75	2.75	1.75	1.75	1.80	2.35	2.35	2.60	2.60
	yds	2 ³ / ₄ *	2 ³ / ₄ *	2 ³ / ₄ *	2 ³ / ₄ *	3 ¹ / ₈ *	3 ¹ / ₈ *	3 ¹ / ₈ *	2	2	2	2 ⁵ / ₈ *	2 ⁵ / ₈ *	2 ⁷ / ₈ *	2 ⁷ / ₈ *
C	m	0.90	0.90	0.90	0.90	0.90	0.95	0.95	0.50	0.50	0.50	0.50	0.55	0.90	0.90
	yds	1	1	1	1	1	1 ¹ / ₈	1 ¹ / ₈	5/8	5/8	5/8	5/8	3/4	1	1
D	m	2.05	2.05	2.10	2.20	2.30	2.30	2.30	1.20	1.20	1.20	1.45	2.10	2.10	2.10
	yds	2 ³ / ₈ *	2 ³ / ₈ *	2 ³ / ₈ *	2 ¹ / ₂ *	2 ⁵ / ₈ *	2 ⁵ / ₈ *	2 ⁵ / ₈ *	1 ³ / ₈ *	1 ³ / ₈ *	1 ³ / ₈ *	1 ³ / ₄ *	2 ³ / ₈ *	2 ³ / ₈ *	2 ³ / ₈ *

→ mit Richtung • avec sens • with nap

★ ohne Richtung • sans sens • without nap

8479