



B



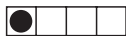
A



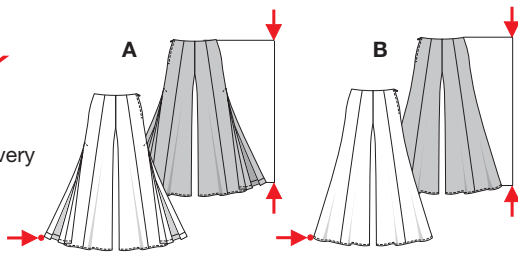
A

B

**burda**  
**EASY**



sehr leicht, très facile, very easy, muy fácil.



A B 106 - 109 cm  
41 3/4" to 43"

A 146 - 158 cm  
57 1/2" to 62 1/4"

B 110 - 122 cm  
43 1/2" to 48"

**HÜFTHOSE • PANTALON TAILLE BASSE**  
**HIP PANTS • PANTALON DE CADERA**

Größen Tailles • Sizes	Eur. US	114 cm / 45 ins						140 cm / 55 ins					
		32	34	36	38	40	42	32	34	36	38	40	42
A	m	3.10	3.10	3.20	3.35	3.35	3.45	2.45	2.45	2.45	2.50	2.65	2.80
	yds	3 1/2	3 1/2	3 1/2	3 3/4	3 3/4	3 3/4	2 3/4	2 3/4	2 3/4	3	3 1/8	3 1/8
		★	★	★	★	★	★	★	★	★	★	★	★
B	m	2.50	2.50	2.50	2.50	2.55	2.55	2.25	2.25	2.25	2.30	2.30	2.30
	yds	2 3/4	2 3/4	2 3/4	2 3/4	2 7/8	2 7/8	2 1/8	2 1/8	2 1/8	2 3/8	2 3/8	2 3/8
		★	★	★	★	★	★	★	★	★	★	★	★

★ ohne Richtung • sans sens • without nap

**Stoffempfehlung:** Krepptoffe, schwere Viskose, Leinenmischgewebe.  
**Tissus conseillés:** crêpe, viscose lourde, lin mélange.  
**Recommended fabrics:** crepe fabric, heavy viscose rayon, linen blends.

**8512**