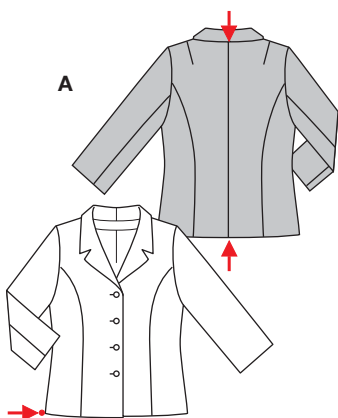
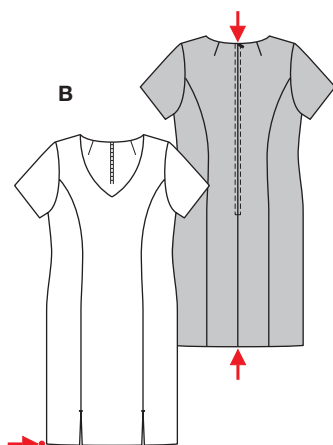


PLUS Größen • Tailles • Sizes
 Eur.: **46 - 60**
 US: **20 - 34**



A 64 - 67 cm
 25 1/4" to 26 1/2"

A 122 - 164 cm
 48" to 64 1/2"



BC 105 - 108 cm
 41 1/2" to 42 1/2"

BC 113 - 155 cm
 44 1/2" to 61"



A

B

C

A

C

B

KLEID + JACKE

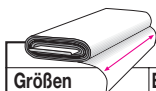


mittel, moins facile, average, dificultad media.

A: normal weit, semi-ajusté, semi-fitted; **BC:** körpernah, ajusté, fitted. **ABC Schulter**
Epaule • Shoulder: normal, normale, average width.

Stoffempfehlung: Stoffe mit Stretchanteil: Leinenmischgewebe, leichte Wollstoffe.
Tissus conseillés: tissus avec pourcentage stretch: lin mélangé, tissus en laine légers.

ROBE + VESTE • DRESS + JACKET • VESTIDO + CHAQUETA



Größen Tailles • Sizes	Eur. US	114 cm / 45 ins								140 cm / 55 ins							
		46 20	48 22	50 24	52 26	54 28	56 30	58 32	60 34	46 20	48 22	50 24	52 26	54 28	56 30	58 32	60 34
A	m yds	2.60 2 7/8	2.65 3	2.65 3	2.70 3	2.70 3	2.90 3 1/4	2.90 3 1/4	2.90 3 1/4	2.00 2 1/4	2.00 2 1/4	2.00 2 1/4	2.00 2 1/4	2.00 2 1/4	2.30 2 5/8	2.30 2 5/8	2.30 2 5/8
A Futter • Doublure Lining	m yds	1.60 1 3/4	1.65 1 7/8	1.65 1 7/8	1.65 1 7/8	1.90 2 1/8	1.90 2 1/8	1.90 2 1/8	1.90 2 1/8	1.30 1 1/2	1.35 1 5/8	1.35 1 5/8	1.35 1 5/8	1.40 1 5/8	1.65 1 7/8	1.65 1 7/8	1.65 1 7/8
BC	m yds	2.20 2 1/2	2.20 2 1/2	2.20 2 1/2	2.60 2 7/8	2.60 2 7/8	2.60 2 7/8	2.60 2 7/8	2.60 2 7/8	1.50 1 3/4	2.10 2 3/8	2.10 2 3/8	2.10 2 3/8	2.10 2 3/8	2.25 2 5/8	2.25 2 5/8	2.25 2 5/8
BC Futter • Doublure Lining	m yds	2.00 2 1/4	2.00 2 1/4	2.00 2 1/4	2.00 2 1/4	2.20 2 1/2	2.20 2 1/2	2.20 2 1/2	2.20 2 1/2	1.20 1 3/8	2.00 2 1/4	2.00 2 1/4	2.00 2 1/4	2.05 2 3/8	2.05 2 3/8	2.05 2 3/8	2.05 2 3/8

Recommended fabrics:
 fabrics containing stretch: linen blends, lightwt. wools.

→ mit Richtung • avec sens • with nap