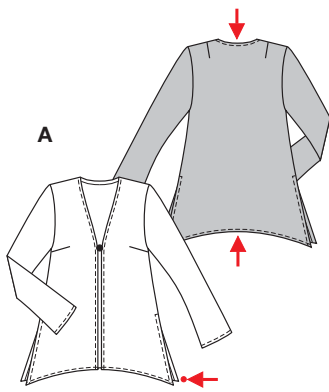
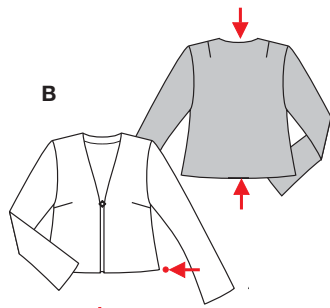


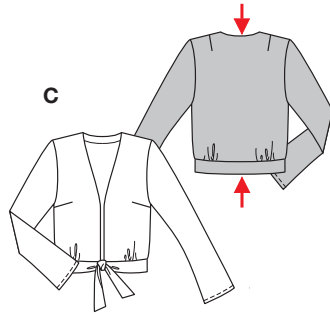
burda[®]
EASY



↓
A 72 - 75 cm
28¹/₂" to 29³/₄"
↑
A 134 - 171 cm
52³/₄" to 67¹/₄"



↓
B 51 - 54 cm
20¹/₄" to 21¹/₄"
↑
B 113 - 150 cm
44¹/₂" to 59"



↓
C 51 - 54 cm
20¹/₄" to 21¹/₄"
↑

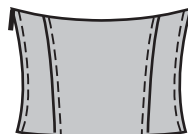
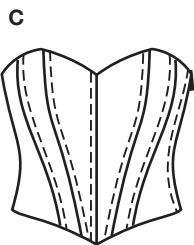
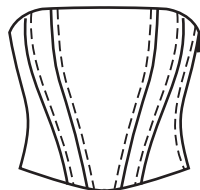
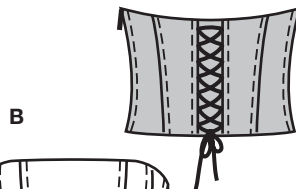
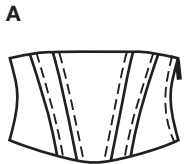
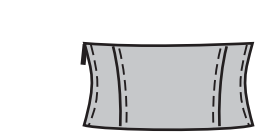
Weitere Angaben siehe Schnitttüte
Autres indications voir pochette du patron
See pattern envelope for further details
Más indicaciones, en la bolsa con los patrones.

8595
★

PLUS Größen • Tailles • Sizes
Eur.: **36 - 50**
US: **10 - 24**



burda[®]



Weitere Angaben siehe Schnitttüte
Autres indications voir pochette du patron
See pattern envelope for further details
Más indicaciones, en la bolsa con los patrones.

8601
★

Größen • Tailles • Sizes
Eur.: **34 - 44**
US: **8 - 18**

