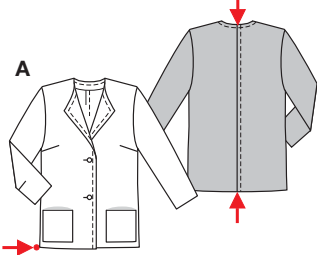
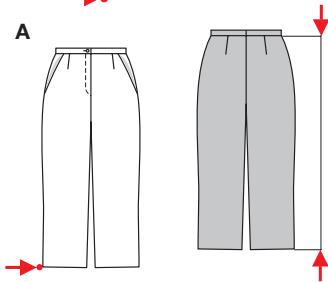


Größen • Tailles • Sizes
Eur.: **34 - 44**
US: **8 - 18**



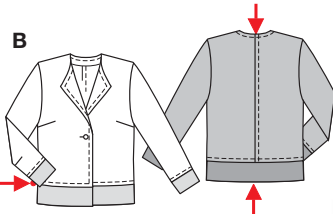
A 62 - 65 cm
24 1/2" to 25 3/4"

A 96 - 117 cm
37 3/4" to 46"



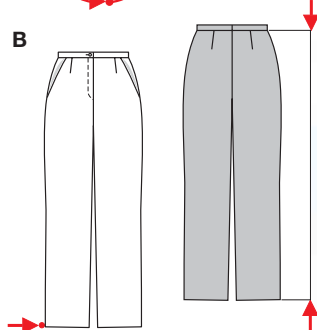
A 82 - 85 cm
32 1/2" to 33 1/2"

A 44 - 51 cm
17 1/4" to 20 1/4"



B 58 - 61 cm
23" to 24"

B 96 - 117 cm
37 3/4" to 46"

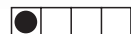


B 103 - 106 cm
40 3/4" to 41 3/4"

B 44 - 51 cm
17 1/4" to 20 1/4"



HOSENANZUG



sehr leicht, très facile, very easy, muy fácil.

Jacke/Veste/Jacket: normal weit, semi-ajusté, semi-fitted; **Schulter • Epaule** **Shoulder:** normal, normale, average width. **Hose/Pantalon/Pants:** eng anliegend, très ajusté, close fitting.

Stoffempfehlung: Leinen, Gabardine, Kreppstoffe.

Tissus conseillés: lin, gabardine, crêpe.

Recommended fabrics: linen, gabardine, crepe fabric.

ENSEMBLE-PANTALON • PANTSUIT • TRAJE PANTALON

Größen Tailles • Sizes	Eur. US	114 cm / 45 ins						140 cm / 55 ins					
		34	36	38	40	42	44	34	36	38	40	42	44
A	m	2.75	3.05	3.25	3.35	3.35	3.55	2.25	2.55	2.55	2.60	2.80	2.85
	yds	3 1/8	3 1/2	3 5/8	3 3/4	3 3/4	4	2 5/8	2 7/8	2 7/8	2 7/8	3 1/8	3 1/8
B	m	3.00	3.15	3.25	3.40	3.45	3.50	2.25	2.35	2.60	2.65	2.80	3.10
	yds	3 3/8	3 1/2	3 5/8	3 3/4	3 7/8	3 7/8	2 5/8	2 5/8	2 7/8	3	3 1/8	3 1/2
B Garniturstoff • Tissu garniture Contrasting fabric	m	0.40	0.40	0.60	0.60	0.60	0.60	0.40	0.40	0.40	0.40	0.40	0.40
	yds	1/2	1/2	3/4	3/4	3/4	3/4	1/2	1/2	1/2	1/2	1/2	1/2

→ mit Richtung • avec sens • with nap

8619
★