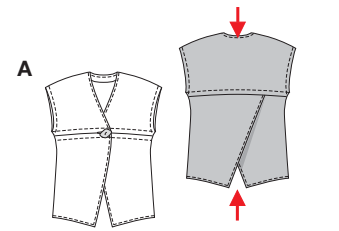
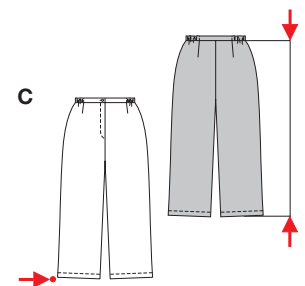
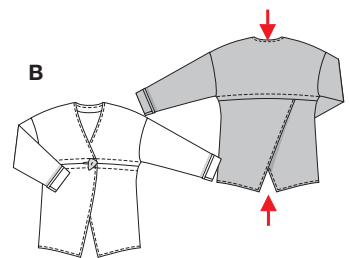


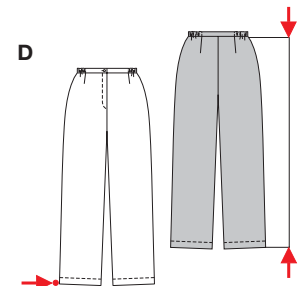
PLUS Größen • Tailles • Sizes
Eur.: **44 - 58**
US: **18 - 32**



AB 77 - 86 cm
30 1/2" to 34"

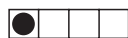


C 89 - 93 cm
35" to 36 3/4"
C 55 - 66 cm
21 3/4" to 26"



D 108 - 112 cm
42 1/2" to 44 1/4"
D 53 - 60 cm
21" to 23 3/4"

HOSENANZUG



sehr leicht, très facile, very easy, muy fácil.

AB: weit, ample, loose fitting; **Schulter • Epau**

Shoulder: sehr breit, très large, extra broad.

CD: körpernah, ajusté, fitted.

Stoffempfehlung: Leinen, Leinenmischgewebe.

Tissus conseillés: lin, lin mélangé.

Recommended fabrics: linen, linen blends.

ENSEMBLE-PANTALON • PANTSUIT • TRAJE PANTALON

Größen Tailles • Sizes	Eur. US	114 cm / 45 ins								140 cm / 55 ins							
		44 18	46 20	48 22	50 24	52 26	54 28	56 30	58 32	44 18	46 20	48 22	50 24	52 26	54 28	56 30	58 32
A	m yds	1.80 2	1.80 2	1.80 2	1.85 2 1/8	2.10 2 3/8	2.20 2 1/2	2.35 2 5/8	2.35 2 5/8	1.55 1 3/4	1.55 1 3/4	1.65 1 7/8	1.75 2	1.90 2 1/8	1.95 2 1/4	1.95 2 1/4	1.95 2 1/4
B	m yds	2.35 2 5/8	2.35 2 5/8	2.35 2 5/8	2.35 2 5/8	2.50 2 3/4	2.60 2 7/8	2.80 3 1/8	2.80 3 1/8	2.10 2 3/8	2.10 2 3/8	2.20 2 1/2	2.25 2 5/8	2.40 2 5/8	2.45 2 3/4	2.45 2 3/4	2.45 2 3/4
C	m yds	1.95 2 1/4	1.95 2 1/4	2.00 2 1/4	2.00 2 1/4	2.00 2 1/4	2.05 2 3/8	2.05 2 3/8	2.05 2 3/8	1.75 2	1.75 2	1.80 2	1.95 2 1/4	2.00 2 1/4	2.00 2 1/4	2.05 2 3/8	2.05 2 3/8
D	m yds	2.35 2 5/8	2.35 2 5/8	2.35 2 5/8	2.40 2 5/8	2.40 2 5/8	2.45 2 3/4	2.45 2 3/4	2.45 2 3/4	2.10 2 3/8	2.10 2 3/8	2.15 2 1/2	2.35 2 5/8	2.40 2 5/8	2.40 2 5/8	2.40 2 5/8	2.40 2 5/8

→ mit Richtung • avec sens • with nap

★ ohne Richtung • sans sens • without nap

8627